



**ELECTRONIC COPY**

## LABORATORY GROWN DIAMOND REPORT

May 26, 2025	
IGI Report Number	LG710585850
Description	LABORATORY GROWN DIAMOND
Shape and Cutting Style	ROUND BRILLIANT
Measurements	7.39 - 7.43 X 4.59 MM

## GRADING RESULTS

Carat Weight	1.56 CARAT
Color Grade	E
Clarity Grade	VS 1
Cut Grade	IDEAL

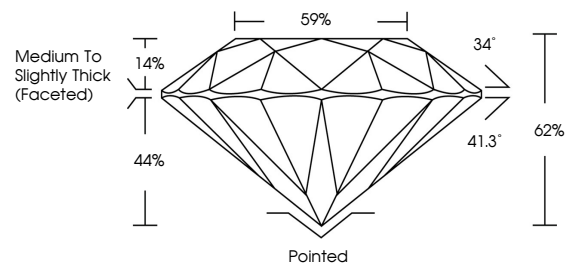
### ADDITIONAL GRADING INFORMATION

Polish	EXCELLENT
Symmetry	EXCELLENT
Fluorescence	NONE
Inscription(s)	 LG710585850

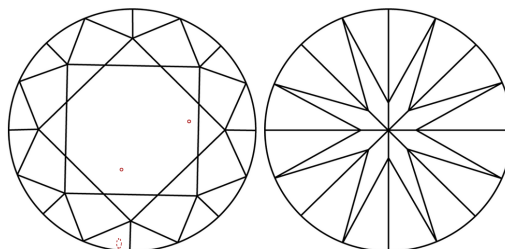
Comments: This Laboratory Grown Diamond was created by Chemical Vapor Deposition (CVD) growth process.  
Type IIa

LG710585850  
Report verification at [igi.org](https://igi.org)

## PROPORTIONS

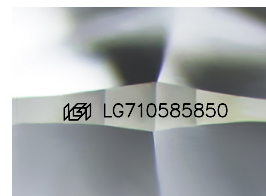


## CLARITY CHARACTERISTICS



## KEY TO SYMBOLS

Red symbols indicate internal characteristics.  
Green symbols indicate external characteristics.



Sample Image Used

## COLOR

D E F G H I J Faint Very Light Light

## CLARITY

IF      WS<sup>1-2</sup>      VS<sup>1-2</sup>      SI<sup>1-2</sup>      |<sup>1-3</sup>

Internally Flawless	Very Very Slightly Included	Very Slightly Included	Slightly Included	Included
------------------------	--------------------------------	---------------------------	----------------------	----------

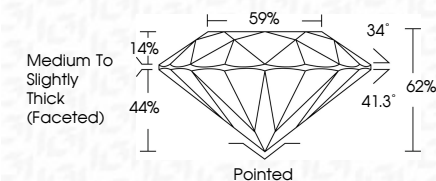
## LABORATORY GROWN DIAMOND REPORT



May 26, 2025	
IGI Report Number	LG710585850
Description	LABORATORY GROWN DIAMOND
Shape and Cutting Style	ROUND BRILLIANT
Measurements	7.39 - 7.43 X 4.59 MM

## GRADING RESULTS

Carat Weight	1.56 CARAT
Color Grade	E
Clarity Grade	VS 1
Cut Grade	IDEAL



### ADDITIONAL GRADING INFORMATION

Polish	EXCELLENT
Symmetry	EXCELLENT
Fluorescence	NONE
Inscription(s)	(16) LG710585850

Comments: This Laboratory Grown Diamond was created by Chemical Vapor Deposition (CVD) growth process.  
Type IIa



© IGI 2020, International Gemological Institute

FD - 10 20



THIS DOCUMENT WAS PRODUCED WITH THE FOLLOWING SECURITY MEASURES: SPECIAL DOCUMENT PAPER, INK SCREENS, WATERMARK, BACKGROUND DESIGNS, HOLOGRAM AND OTHER SECURITY FEATURES NOT LISTED AND DO EXCEED DOCUMENT SECURITY INDUSTRY GUIDELINES

**www.igi.org**

May 26, 2026	Carat Weight	1.55 CARAT
GI Report No. G171058950	Color Grade	E
ROUND BRILLIANT	Clarity Grade	VS 1
	Depth	IDEAL
	Table	62%
	Girdle	59%
	Culet	Medium to Slightly Thick (scored)
	Polish	Excellent
	Symmetry	Excellent
	Fluorescence	NONE
	Inscription(s)	489 LG71058950
	Comments:	This Laboratory Grown Diamond was created by Chemical Vapor Deposition (CVD) growth process.
	Type IIA	