



ELECTRONIC COPY

LG710584346
Report verification at igi.org



May 26, 2025

IGI Report Number **LG710584346**

Description **LABORATORY GROWN DIAMOND**

Shape and Cutting Style **KITE STEP CUT**

Measurements **14.37 X 9.30 X 5.68 MM**

GRADING RESULTS

Carat Weight **3.82 CARATS**

Color Grade **D**

Clarity Grade **VVS 2**

LABORATORY GROWN DIAMOND REPORT

May 26, 2025

IGI Report Number **LG710584346**

Description **LABORATORY GROWN DIAMOND**

Shape and Cutting Style **KITE STEP CUT**

Measurements **14.37 X 9.30 X 5.68 MM**

GRADING RESULTS

Carat Weight **3.82 CARATS**

Color Grade **D**

Clarity Grade **VVS 2**

ADDITIONAL GRADING INFORMATION

Polish **EXCELLENT**

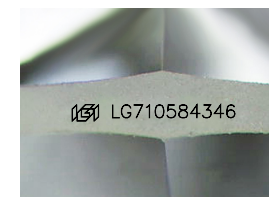
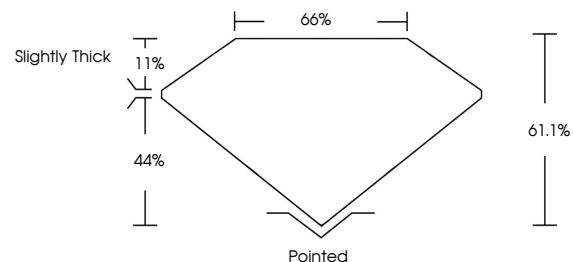
Symmetry **EXCELLENT**

Fluorescence **NONE**

Inscription(s) **IGI LG710584346**

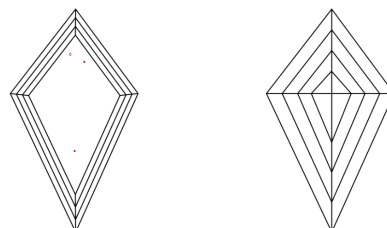
Comments: This Laboratory Grown Diamond was created by Chemical Vapor Deposition (CVD) growth process. Type IIa

PROPORTIONS



Sample Image Used

CLARITY CHARACTERISTICS



KEY TO SYMBOLS

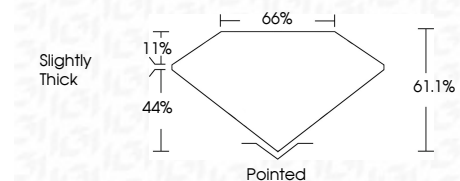
Red symbols indicate internal characteristics.
Green symbols indicate external characteristics.

COLOR

D E F G H I J Faint Very Light Light

CLARITY

IF	VS ¹⁻²	VS ¹⁻²	SI ¹⁻²	I ¹⁻³
Internally Flawless	Very Very Slightly Included	Very Slightly Included	Slightly Included	Included



ADDITIONAL GRADING INFORMATION

Polish **EXCELLENT**

Symmetry **EXCELLENT**

Fluorescence **NONE**

Inscription(s) **IGI LG710584346**

Comments: This Laboratory Grown Diamond was created by Chemical Vapor Deposition (CVD) growth process. Type IIa



IGI



May 26, 2025
IGI Report No LG710584346
KITE STEP CUT

3.82 CARATS
D

14.37 X 9.30 X 5.68 MM
VVS 2
61.1%
65%
Slightly Thick

Pointed
EXCELLENT
EXCELLENT
NONE
IGI LG710584346

Comments: This Laboratory Grown Diamond was created by Chemical Vapor Deposition (CVD) growth process. Type IIa