



ELECTRONIC COPY

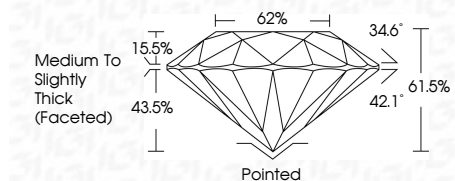
LG710577152
Report verification at igi.org



June 8, 2025
IGI Report Number LG710577152
Description LABORATORY GROWN DIAMOND
Shape and Cutting Style ROUND MIXED CUT
Measurements 8.21 - 8.21 X 5.05 MM

GRADING RESULTS

Carat Weight 2.29 CARATS
Color Grade G
Clarity Grade VVS 2

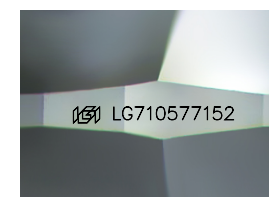


ADDITIONAL GRADING INFORMATION

Polish EXCELLENT
Symmetry EXCELLENT
Fluorescence NONE
Inscription(s) IGI LG710577152
Comments: This Laboratory Grown Diamond was created by Chemical Vapor Deposition (CVD) growth process. Type IIa

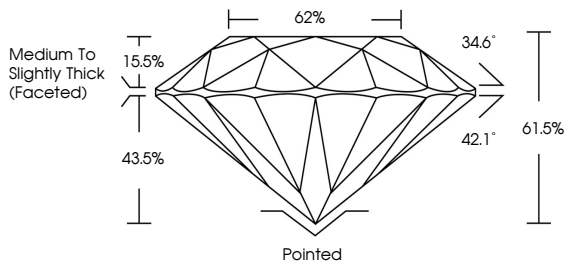


June 8, 2025
IGI Report No LG710577152
ROUND MIXED CUT
2.29 CARATS G
8.21 - 8.21 X 5.05 MM
Carat Weight 2.29 CARATS
Color Grade G
Clarity Grade VVS 2
Depth 61.05%
Table 62%
Girdle Medium to Slightly Thick (Faceted)
Culet Pointed
Polish EXCELLENT
Symmetry EXCELLENT
Fluorescence NONE
Inscription(s) IGI LG710577152
Comments: This Laboratory Grown Diamond was created by Chemical Vapor Deposition (CVD) growth process. Type IIa

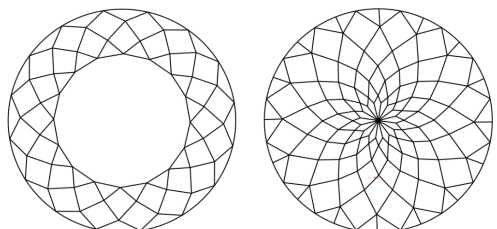


Sample Image Used

PROPORTIONS



CLARITY CHARACTERISTICS



KEY TO SYMBOLS

Red symbols indicate internal characteristics.
Green symbols indicate external characteristics.

COLOR

Table with columns D, E, F, G, H, I, J and color descriptions: Faint, Very Light, Light

CLARITY

Table with columns IF, VS 1-2, VVS 1-2, SI 1-2, I 1-3 and descriptions: Internally Flawless, Very Very Slightly Included, Very Slightly Included, Slightly Included, Included

