



ELECTRONIC COPY

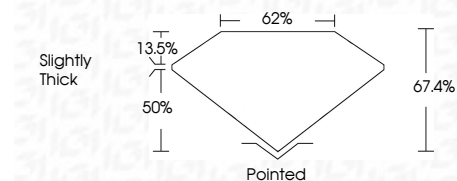
LG710573511
Report verification at igi.org



June 13, 2025
IGI Report Number **LG710573511**
Description **LABORATORY GROWN DIAMOND**
Shape and Cutting Style **CUT CORNERED
RECTANGULAR MODIFIED
BRILLIANT**
Measurements **8.79 X 6.39 X 4.31 MM**

GRADING RESULTS

Carat Weight **2.04 CARATS**
Color Grade **FANCY INTENSE PINK**
Clarity Grade **VS 1**



ADDITIONAL GRADING INFORMATION

Polish **EXCELLENT**
Symmetry **EXCELLENT**
Fluorescence **STRONG**
Inscription(s) **IGI LG710573511**

Comments: This Laboratory Grown Diamond was created by Chemical Vapor Deposition (CVD) growth process. Indications of post-growth treatment.



June 13, 2025
IGI Report No LG710573511
CUT CORNERED RECT. MODIFIED BRILLIANT
8.79 X 6.39 X 4.31 MM
2.04 CARATS
FANCY INTENSE PINK
VS 1
67.4%
62%
Slightly Thick
Pointed
EXCELLENT
EXCELLENT
STRONG
IGI LG710573511

Comments: This Laboratory Grown Diamond was created by Chemical Vapor Deposition (CVD) growth process. Indications of post-growth treatment.

LABORATORY GROWN DIAMOND REPORT

June 13, 2025
IGI Report Number **LG710573511**
Description **LABORATORY GROWN DIAMOND**
Shape and Cutting Style **CUT CORNERED RECTANGULAR
MODIFIED BRILLIANT**
Measurements **8.79 X 6.39 X 4.31 MM**

GRADING RESULTS

Carat Weight **2.04 CARATS**
Color Grade **FANCY INTENSE PINK**
Clarity Grade **VS 1**

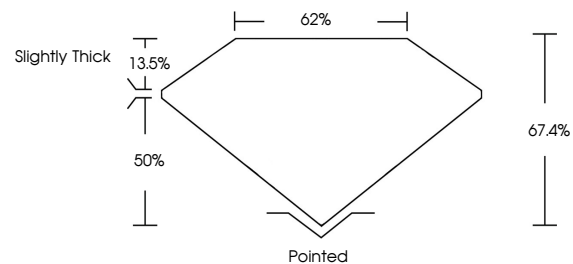
ADDITIONAL GRADING INFORMATION

Polish **EXCELLENT**
Symmetry **EXCELLENT**
Fluorescence **STRONG**

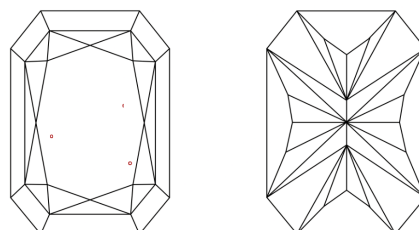
Inscription(s) **IGI LG710573511**

Comments: This Laboratory Grown Diamond was created by Chemical Vapor Deposition (CVD) growth process. Indications of post-growth treatment.

PROPORTIONS

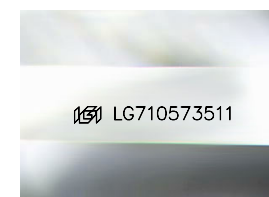


CLARITY CHARACTERISTICS



KEY TO SYMBOLS

Red symbols indicate internal characteristics.
Green symbols indicate external characteristics.



Sample Image Used

COLOR

D E F G H I J Faint Very Light Light

CLARITY

IF VS¹⁻² VS¹⁻² SI¹⁻² I¹⁻³

Internally Flawless Very Very Slightly Included Very Slightly Included Slightly Included Included

