



**ELECTRONIC COPY**

## LABORATORY GROWN DIAMOND REPORT

|                         |                          |
|-------------------------|--------------------------|
| May 26, 2025            |                          |
| IGI Report Number       | LG710570659              |
| Description             | LABORATORY GROWN DIAMOND |
| Shape and Cutting Style | ROUND BRILLIANT          |
| Measurements            | 6.57 - 6.61 X 4.08 MM    |

## GRADING RESULTS

|               |            |
|---------------|------------|
| Carat Weight  | 1.10 CARAT |
| Color Grade   | D          |
| Clarity Grade | VS 1       |
| Cut Grade     | IDEAL      |

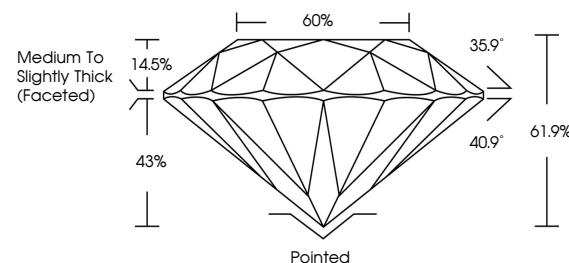
### ADDITIONAL GRADING INFORMATION

|                |                |
|----------------|----------------|
| Polish         | EXCELLENT      |
| Symmetry       | EXCELLENT      |
| Fluorescence   | NONE           |
| Inscription(s) | 15 LG710570659 |

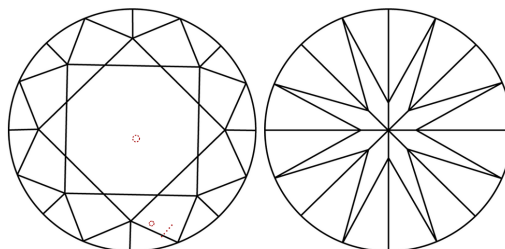
Comments: This Laboratory Grown Diamond was created by Chemical Vapor Deposition (CVD) growth process.  
Type IIa

LG710570659  
Report verification at [igi.org](https://igi.org)

## PROPORTIONS

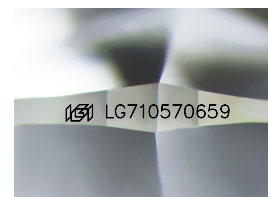


## CLARITY CHARACTERISTICS



## KEY TO SYMBOLS

Red symbols indicate internal characteristics.  
Green symbols indicate external characteristics.



Sample Image Used

## COLOR

D E F G H I J Faint Very Light Light

## CLARITY

IF WS<sup>1-2</sup> VS<sup>1-2</sup> SI<sup>1-2</sup> |<sup>1-3</sup>

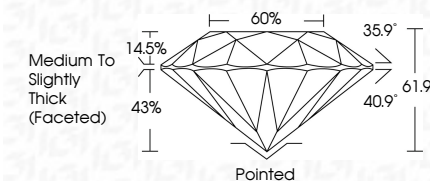
|                        |                                |                           |                      |          |
|------------------------|--------------------------------|---------------------------|----------------------|----------|
| Internally<br>Flawless | Very Very<br>Slightly Included | Very<br>Slightly Included | Slightly<br>Included | Included |
|------------------------|--------------------------------|---------------------------|----------------------|----------|



|                         |                          |
|-------------------------|--------------------------|
| May 26, 2025            |                          |
| IGI Report Number       | LG710570659              |
| Description             | LABORATORY GROWN DIAMOND |
| Shape and Cutting Style | ROUND BRILLIANT          |
| Measurements            | 6.57 - 6.61 X 4.08 MM    |

## GRADING RESULTS

|               |            |
|---------------|------------|
| Carat Weight  | 1.10 CARAT |
| Color Grade   | D          |
| Clarity Grade | VS 1       |
| Cut Grade     | IDEAL      |



### ADDITIONAL GRADING INFORMATION

|   |   |
|---|---|
| Polish  | EXCELLENT   |
| Symmetry  | EXCELLENT   |
| Fluorescence  | NONE  |
| Inscription(s)  |  LG710570659 |
| <p>Comments: This Laboratory Grown Diamond was created by Chemical Vapor Deposition (CVD) growth process.</p> <p>Type IIa</p> |   |



© IGI 2020, International Gemological Institute

FD - 10 20



THIS DOCUMENT WAS PRODUCED WITH THE FOLLOWING SECURITY MEASURES: SPECIAL DOCUMENT PAPER, INK SCREENS, WATERMARK, BACKGROUND DESIGNS, HOLOGRAM AND OTHER SECURITY FEATURES NOT LISTED AND DO EXCEED DOCUMENT SECURITY INDUSTRY GUIDELINE

**www.igi.org**

