

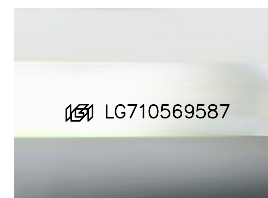
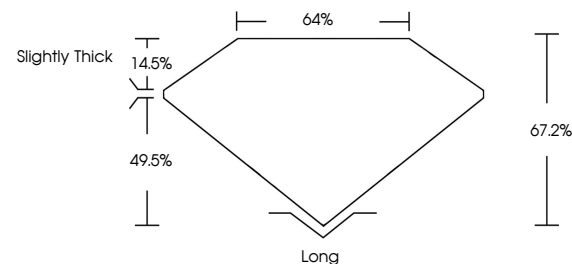


**ELECTRONIC COPY**

## LABORATORY GROWN DIAMOND REPORT

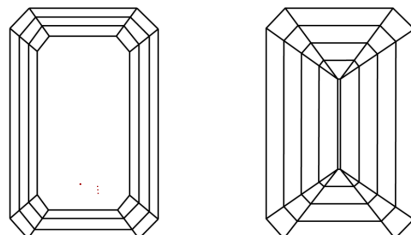
LG710569587  
Report verification at [igi.org](https://igi.org)

## PROPORTIONS



Sample Image Used

## CLARITY CHARACTERISTICS



### KEY TO SYMBOLS

Red symbols indicate internal characteristics.  
Green symbols indicate external characteristics.

## COLOR

D E F G H I J Faint Very Light Light

## CLARITY

IF	VS <sup>1-2</sup>	VS <sup>1-2</sup>	SI <sup>1-2</sup>	I <sup>1-3</sup>
Internally Flawless	Very Very Slightly Included	Very Slightly Included	Slightly Included	Included

## LABORATORY GROWN DIAMOND REPORT



May 24, 2025

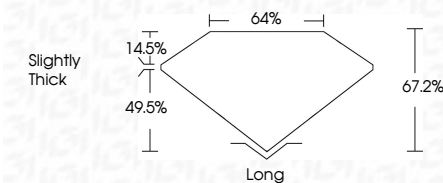
IGI Report Number **LG710569587**Description **LABORATORY GROWN DIAMOND**Shape and Cutting Style **EMERALD CUT**

Measurements 7.01 X 4.82 X 3.24 MM

## GRADING RESULTS

Carat Weight 1.07 CARAT

Color Grade D

Clarity Grade **VS 2**

### ADDITIONAL GRADING INFORMATION

Polish **EXCELLENT**Symmetry **EXCELLENT**Fluorescence **NONE**Inscription(s)  LG710569587

Comments: This Laboratory Grown Diamond was created by Chemical Vapor Deposition (CVD) growth process.  
Type IIa



© IGI 2020, International Gemological Institute

FD - 10 20



THIS DOCUMENT WAS PRODUCED WITH THE FOLLOWING SECURITY MEASURES: SPECIAL DOCUMENT PAPER, INK SCREENS, WATERMARK, BACKGROUND DESIGNS, HOLOGRAM AND OTHER SECURITY FEATURES NOT LISTED AND DO EXCEED DOCUMENT SECURITY INDUSTRY GUIDELINES

**www.igi.org**

May 24, 2025  
GJ Report No | G710569587

<p> <b>EM Report No</b> L671056987  <b>GENERAL CUT</b>  <b>Carat Weight</b> 1.01  <b>Color</b> G  <b>Clarity</b> VS2  <b>Depth</b> 67.2  <b>Table</b> 64%  <b>Grades</b> Slightly Thick  <b>Culet</b> Long  <b>Polish</b> EXCELLENT  <b>Symmetry</b> EXCELLENT  <b>Fluorescence</b> NONE  <b>Measurements</b> 6.71x5.65x3.71 </p>	<p> <b>1.07 CARAT</b>  <b>D</b>  <b>VVS 2</b>  <b>67.2</b>  <b>64%</b>  <b>Slightly Thick</b>  <b>Long</b>  <b>EXCELLENT</b>  <b>EXCELLENT</b>  <b>NONE</b>  <b>6.71x5.65x3.71</b> </p>
---	---

**Comments:**  
This Laboratory Grown Diamond was  
created by Chemical Vapor Deposition  
(CVD) growth process.