



ELECTRONIC COPY

LABORATORY GROWN DIAMOND REPORT

May 23, 2025	
IGI Report Number	LG710567121
Description	LABORATORY GROWN DIAMOND
Shape and Cutting Style	RECTANGULAR CUSHION MIXED CUT
Measurements	15.59 X 9.80 X 6.63 MM

GRADING RESULTS

Carat Weight	9.29 CARATS
Color Grade	F
Clarity Grade	VVS 2

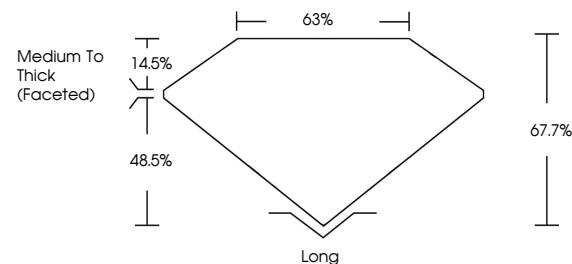
ADDITIONAL GRADING INFORMATION

Polish	EXCELLENT
Symmetry	EXCELLENT
Fluorescence	NONE
Inscription(s)	 LG710567121

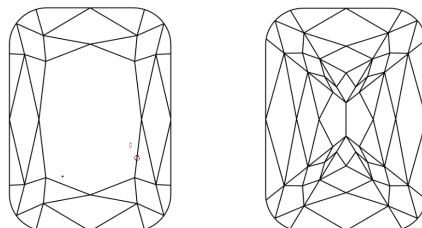
Comments: This Laboratory Grown Diamond was created by Chemical Vapor Deposition (CVD) growth process.
Type IIa

LG710567121
Report verification at igi.org

PROPORTIONS

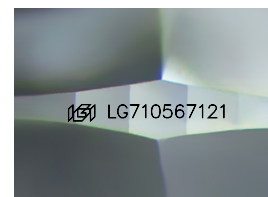


CLARITY CHARACTERISTICS



KEY TO SYMBOLS

Red symbols indicate internal characteristics.
Green symbols indicate external characteristics.



Sample Image Used

COLOR

D E F G H I J Faint Very Light Light

CLARITY

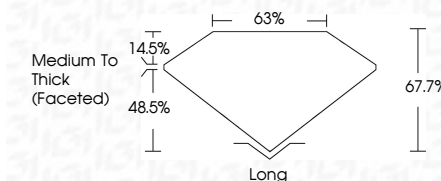
IF VWS¹⁻² VS¹⁻² SI¹⁻² I¹⁻³

Internally Flawless	Very Very Slightly Included	Very Slightly Included	Slightly Included	Included
------------------------	--------------------------------	---------------------------	----------------------	----------

LABORATORY GROWN DIAMOND REPORT



May 23, 2025	
IGI Report Number	LG710567121
Description	LABORATORY GROWN DIAMOND
Shape and Cutting Style	RECTANGULAR CUSHION MIXED CUT
Measurements	15.59 X 9.80 X 6.63 MM
GRADING RESULTS	
Carat Weight	9.29 CARATS
Color Grade	F
Clarity Grade	VVS 2



ADDITIONAL GRADING INFORMATION

Polish	EXCELLENT
Symmetry	EXCELLENT
Fluorescence	NONE
Inscription(s)	 LG710567121
<p>Comments: This Laboratory Grown Diamond was created by Chemical Vapor Deposition (CVD) growth process.</p> <p>Type IIa</p>	



© IGI 2020, International Gemological Institute

FD - 10 20



THIS DOCUMENT WAS PRODUCED WITH THE FOLLOWING SECURITY MEASURES: SPECIAL DOCUMENT PAPER, INK SCREENS, WATERMARK, BACKGROUND DESIGNS, HOLOGRAM AND OTHER SECURITY FEATURES NOT LISTED AND DO EXCEED DOCUMENT SECURITY INDUSTRY GUIDELINES

www.igi.org



May 23, 2025
GI Report No LG710567121
RECTANGULAR CUSHION MIXED CUT

15.59 X 9.80 X 6.63 MM

15.59 X 9.80 X 6.63 MM	9.29 CARATS
Carat Weight	F
Color Grade	

	WS 2
Clarity Grade	

Clarity Grade	VS 2
Depth	67.7%
Table	63%

label	63%
Girdle	Medium To Thick (Faceted)

	Culet	Long
1	0.000	0.000
2	0.000	0.000
3	0.000	0.000
4	0.000	0.000
5	0.000	0.000
6	0.000	0.000
7	0.000	0.000
8	0.000	0.000
9	0.000	0.000
10	0.000	0.000
11	0.000	0.000
12	0.000	0.000
13	0.000	0.000
14	0.000	0.000
15	0.000	0.000
16	0.000	0.000
17	0.000	0.000
18	0.000	0.000
19	0.000	0.000
20	0.000	0.000
21	0.000	0.000
22	0.000	0.000
23	0.000	0.000
24	0.000	0.000
25	0.000	0.000
26	0.000	0.000
27	0.000	0.000
28	0.000	0.000
29	0.000	0.000
30	0.000	0.000
31	0.000	0.000
32	0.000	0.000
33	0.000	0.000
34	0.000	0.000
35	0.000	0.000
36	0.000	0.000
37	0.000	0.000
38	0.000	0.000
39	0.000	0.000
40	0.000	0.000
41	0.000	0.000
42	0.000	0.000
43	0.000	0.000
44	0.000	0.000
45	0.000	0.000
46	0.000	0.000
47	0.000	0.000
48	0.000	0.000
49	0.000	0.000
50	0.000	0.000
51	0.000	0.000
52	0.000	0.000
53	0.000	0.000
54	0.000	0.000
55	0.000	0.000
56	0.000	0.000
57	0.000	0.000
58	0.000	0.000
59	0.000	0.000
60	0.000	0.000
61	0.000	0.000
62	0.000	0.000
63	0.000	0.000
64	0.000	0.000
65	0.000	0.000
66	0.000	0.000
67	0.000	0.000
68	0.000	0.000
69	0.000	0.000
70	0.000	0.000
71	0.000	0.000
72	0.000	0.000
73	0.000	0.000
74	0.000	0.000
75	0.000	0.000
76	0.000	0.000
77	0.000	0.000
78	0.000	0.000
79	0.000	0.000
80	0.000	0.000
81	0.000	0.000
82	0.000	0.000
83	0.000	0.000
84	0.000	0.000
85	0.000	0.000
86	0.000	0.000
87	0.000	0.000
88	0.000	0.000
89	0.000	0.000
90	0.000	0.000
91	0.000	0.000
92	0.000	0.000
93	0.000	0.000
94	0.000	0.000
95	0.000	0.000
96	0.000	0.000
97	0.000	0.000
98	0.000	0.000
99	0.000	0.000
100	0.000	0.000

Culet	Long
Polish	EXCELLENT
Symmetry	EXCELLENT

Symmetry	Fluorescence	EXCELLENT
		NONE
		681 G710567121

Comments:
This Laboratory Grown Diamond was
created by Chemical Vapor Deposition
(CVD) growth process.