

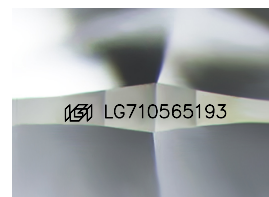
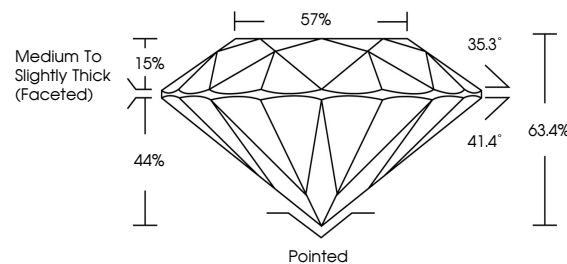


**ELECTRONIC COPY**

## LABORATORY GROWN DIAMOND REPORT

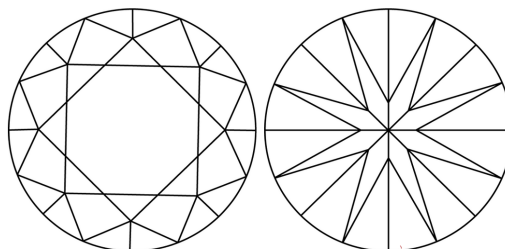
LG710565193  
Report verification at [lgi.org](https://lgi.org)

## PROPORTIONS



Sample Image Used

## CLARITY CHARACTERISTICS



## KEY TO SYMBOLS

Red symbols indicate internal characteristics.  
Green symbols indicate external characteristics.

## COLOR

D E F G H I J Faint Very Light Light

## CLARITY

IF WS<sup>1-2</sup> VS<sup>1-2</sup> SI<sup>1-2</sup> |<sup>1-3</sup>

Internally Flawless	Very Very Slightly Included	Very Slightly Included	Slightly Included	Included
------------------------	--------------------------------	---------------------------	----------------------	----------



© IGI 2020, International Gemological Institute

FD - 10 20

**www.igi.org**

## LABORATORY GROWN DIAMOND REPORT



May 27, 2025

IGI Report Number **LG710565193**Description **LABORATORY GROWN DIAMOND**Shape and Cutting Style **ROUND BRILLIANT**

Measurements 6.43 - 6.48 X 4.09 MM

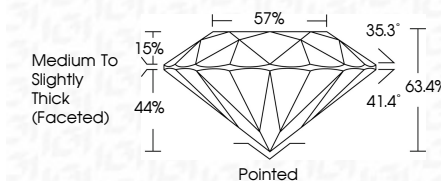
## GRADING RESULTS

Carat Weight 1.06 CARAT

Color Grade H

Clarity Grade **VVS 2**

Cut Grade **EXCELLENT**



### ADDITIONAL GRADING INFORMATION

Polish **EXCELLENT**Symmetry **EXCELLENT**Fluorescence **NONE**Inscription(s)  LG710565193

Comments: As Grown - No indication of post-growth treatment.

This Laboratory Grown Diamond was created by High Pressure High Temperature (HPHT) growth process.

Type II  
Faint Blue



May 27, 2026	1.06 CARAT	VVS 2	Painted	Comments: None. No indication of post-growth treatment. This Laboratory Grown Diamond was created by High Pressure High Temperature (HPHT) growth process.
GI Report No. LG710565193	Color Grade	EXCELLENT	EXCELLENT	
ROUND BRILLIANT	Clarity Grade	63.5%	NONE	
	Cut Grade	57%		
	Depth	Medium to Slightly Thick (faced)	88.1 LG710565193	
	Table			
	Girdle			
	Culet			
	Polish			
	Symmetry			
	Fluorescence			
	Annotations			