



ELECTRONIC COPY

LG710563020
Report verification at igi.org



May 26, 2025

IGI Report Number **LG710563020**

Description **LABORATORY GROWN DIAMOND**

Shape and Cutting Style **EMERALD CUT**

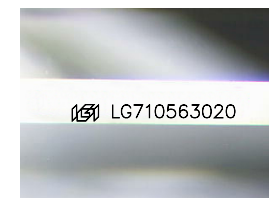
Measurements **6.97 X 4.93 X 3.28 MM**

GRADING RESULTS

Carat Weight **1.09 CARAT**

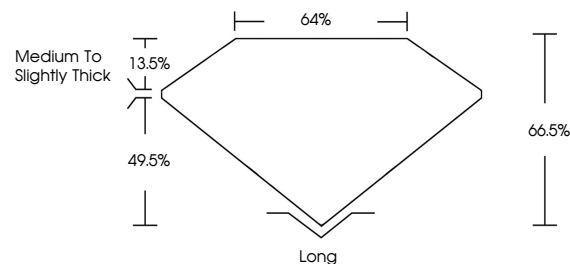
Color Grade **D**

Clarity Grade **VS 1**

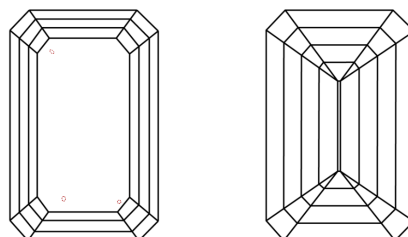


Sample Image Used

PROPORTIONS



CLARITY CHARACTERISTICS



KEY TO SYMBOLS

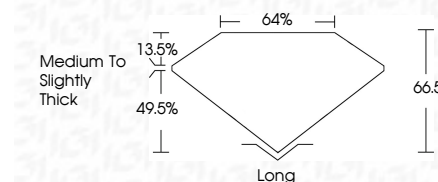
Red symbols indicate internal characteristics.
Green symbols indicate external characteristics.

COLOR

D E F G H I J Faint Very Light Light

CLARITY

IF	VS ¹⁻²	VS ¹⁻²	SI ¹⁻²	I ¹⁻³
Internally Flawless	Very Very Slightly Included	Very Slightly Included	Slightly Included	Included



ADDITIONAL GRADING INFORMATION

Polish **EXCELLENT**

Symmetry **EXCELLENT**

Fluorescence **NONE**

Inscription(s) **IGI LG710563020**

Comments: This Laboratory Grown Diamond was created by Chemical Vapor Deposition (CVD) growth process. Type IIa



IGI



May 26, 2025
IGI Report No LG710563020
EMERALD CUT
6.97 X 4.93 X 3.28 MM
1.09 CARAT
D
VS 1
66.5%
49.5%
13.5%
Medium to Slightly Thick
Long
EXCELLENT
EXCELLENT
NONE
IGI LG710563020

Comments: This Laboratory Grown Diamond was created by Chemical Vapor Deposition (CVD) growth process. Type IIa