



INTERNATIONAL GEMOLOGICAL INSTITUTE

ELECTRONIC COPY



May 23, 2025

IGI Report Number LG710562819

EMERALD CUT

LABORATORY GROWN DIAMOND

6.43 X 4.77 X 3.27 MM

Carat Weight 0.97 CARAT

Color Grade D

Clarity Grade VVS 1

Polish EXCELLENT

Symmetry EXCELLENT

Fluorescence NONE

Inscription(s) IGI LG710562819

Comments: This Laboratory Grown Diamond was created by Chemical Vapor Deposition (CVD) growth process. Type IIa

LABORATORY GROWN DIAMOND REPORT

May 23, 2025

IGI Report Number

LG710562819

Description

LABORATORY GROWN DIAMOND

Shape and Cutting Style

EMERALD CUT

Measurements

6.43 X 4.77 X 3.27 MM

GRADING RESULTS

Carat Weight

0.97 CARAT

Color Grade

D

Clarity Grade

VVS 1

ADDITIONAL GRADING INFORMATION

Polish

EXCELLENT

Symmetry

EXCELLENT

Fluorescence

NONE

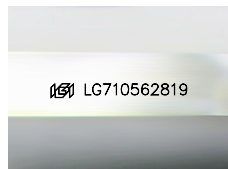
Inscription(s)

IGI LG710562819

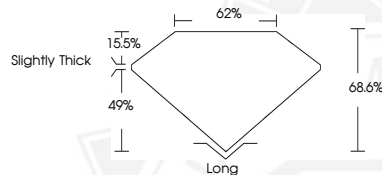
Comments: This Laboratory Grown Diamond was created by

Chemical Vapor Deposition (CVD) growth process.

Type IIa



Sample Image Used



May 23, 2025

IGI Report Number LG710562819

EMERALD CUT

LABORATORY GROWN DIAMOND

6.43 X 4.77 X 3.27 MM

Carat Weight 0.97 CARAT

Color Grade D

Clarity Grade VVS 1

Polish EXCELLENT

Symmetry EXCELLENT

Fluorescence NONE

Inscription(s) IGI LG710562819

Comments: This Laboratory Grown Diamond was created by Chemical Vapor Deposition (CVD) growth process. Type IIa



THIS DOCUMENT WAS PRODUCED WITH THE FOLLOWING SECURITY MEASURES: SPECIAL DOCUMENT PAPER, INK SCREENS, WATERMARK, BACKGROUND DESIGN, HOLOGRAM AND OTHER SECURITY FEATURES NOT LISTED AND DO EXCEED DOCUMENT SECURITY INDUSTRY GUIDELINES.

For terms & conditions and to verify this report, please visit www.igi.org