

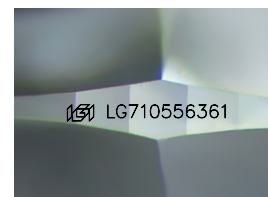
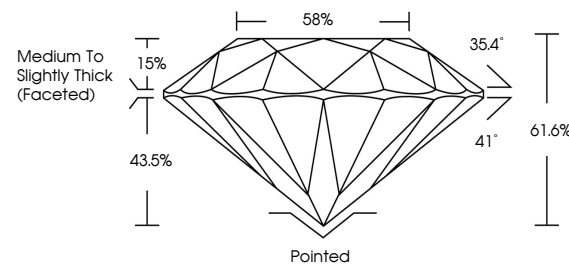


**ELECTRONIC COPY**

## LABORATORY GROWN DIAMOND REPORT

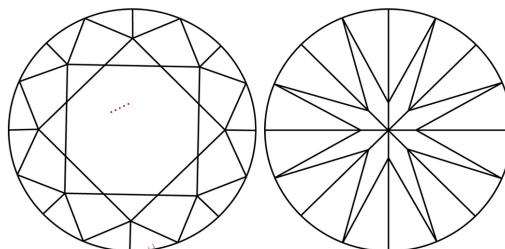
LG710556361  
Report verification at [igi.org](https://igi.org)

## PROPORTIONS



Sample Image Used

## CLARITY CHARACTERISTICS



## KEY TO SYMBOLS

Red symbols indicate internal characteristics.  
Green symbols indicate external characteristics.

## COLOR

D E F G H I J Faint Very Light Light

## CLARITY

IF WS<sup>1-2</sup> VS<sup>1-2</sup> SI<sup>1-2</sup> |<sup>1-3</sup>

Internally Flawless	Very Very Slightly Included	Very Slightly Included	Slightly Included	Included
------------------------	--------------------------------	---------------------------	----------------------	----------

## LABORATORY GROWN DIAMOND REPORT



May 24, 2025

IGI Report Number LG710556361

Description **LABORATORY GROWN DIAMOND**Shape and Cutting Style **ROUND BRILLIANT**

Measurements 7.42 - 7.45 X 4.58 MM

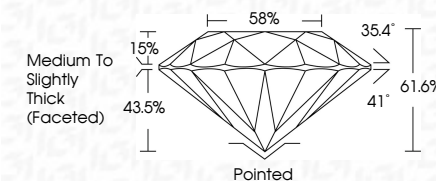
## GRADING RESULTS

Carat Weight 1.53 CARAT

Color Grade **E**

Clarity Grade VS 1

Cut Grade **IDEAL**



### ADDITIONAL GRADING INFORMATION

Polish **EXCELLENT**Symmetry **EXCELLENT**Fluorescence **NONE**Inscription(s)  LG710556361

Comments: This Laboratory Grown Diamond was created by Chemical Vapor Deposition (CVD) growth process.  
Type IIa



© IGI 2020, International Gemological Institute

FD - 10 20

**www.igi.org**

THIS DOCUMENT WAS PRODUCED WITH THE FOLLOWING SECURITY MEASURES: SPECIAL DOCUMENT PAPER, INK SCREENS, WATERMARK BACKGROUND DESIGNS, HOLOGRAM AND OTHER SECURITY FEATURES NOT LISTED AND DO EXCEED DOCUMENT SECURITY INDUSTRY GUIDELINES

May 24, 2025  
GI Report No LG710556361  
ROUND BRILLIANT

ROUND BRILLIANT		4.2 - 7.45 X 5.95 MM		1.53 CARAT	
		Carat Weight		VS1	
		Color Grade		IDEAL	
		Clarity Grade		58%	
		Cut Grade		Medium to Slightly Thick Faceted	
		Depth		Pointed	
		Table		EXCELLENT	
		Girdle		EXCELLENT	
		Symmetry		NONE	
		Fluorescence		VERY FINE	

**Comments:**  
This Laboratory Grown Diamond was  
created by Chemical Vapor Deposition  
(CVD) growth process.