



**ELECTRONIC COPY**

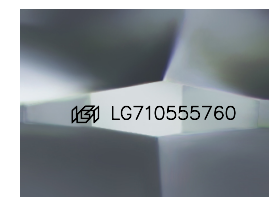
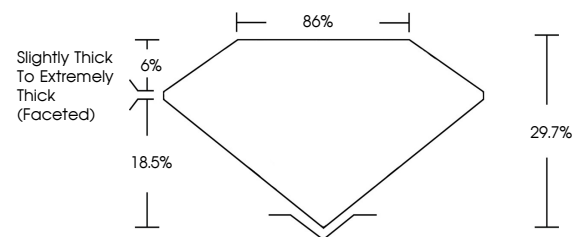
LG710555760  
Report verification at [igi.org](http://igi.org)



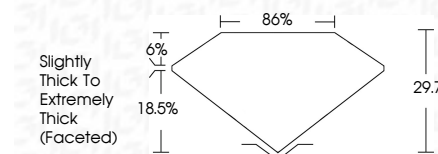
May 28, 2025  
IGI Report Number **LG710555760**  
Description **LABORATORY GROWN DIAMOND**  
Shape and Cutting Style **ROSE CUT**  
Measurements **9.59 X 9.64 X 2.86 MM**  
**GRADING RESULTS**  
Carat Weight **2.43 CARATS**  
Color Grade **E**  
Clarity Grade **VS 1**

May 28, 2025  
IGI Report Number **LG710555760**  
Description **LABORATORY GROWN DIAMOND**  
Shape and Cutting Style **ROSE CUT**  
Measurements **9.59 X 9.64 X 2.86 MM**  
**GRADING RESULTS**  
Carat Weight **2.43 CARATS**  
Color Grade **E**  
Clarity Grade **VS 1**

**PROPORTIONS**



Sample Image Used



**ADDITIONAL GRADING INFORMATION**

Polish **EXCELLENT**  
Symmetry **EXCELLENT**  
Fluorescence **NONE**  
Inscription(s) **IGI LG710555760**

Comments: This Laboratory Grown Diamond was created by Chemical Vapor Deposition (CVD) growth process.  
Type IIa

**ADDITIONAL GRADING INFORMATION**

Polish **EXCELLENT**  
Symmetry **EXCELLENT**  
Fluorescence **NONE**  
Inscription(s) **IGI LG710555760**  
Comments: This Laboratory Grown Diamond was created by Chemical Vapor Deposition (CVD) growth process.  
Type IIa

**COLOR**

D E F G H I J Faint Very Light Light

**CLARITY**

IF	VS <sup>1-2</sup>	VS <sup>1-2</sup>	SI <sup>1-2</sup>	I <sup>1-3</sup>
Internally Flawless	Very Very Slightly Included	Very Slightly Included	Slightly Included	Included



**IGI**



May 28, 2025  
IGI Report No LG710555760  
**ROSE CUT**  
9.59 X 9.64 X 2.86 MM  
2.43 CARATS  
E  
29.7%  
86%  
Slightly Thick To Extremely Thick (Faceted)  
EXCELLENT  
EXCELLENT  
NONE  
IGI LG710555760  
Comments: This Laboratory Grown Diamond was created by Chemical Vapor Deposition (CVD) growth process.  
Type IIa