



ELECTRONIC COPY

LG710555758
Report verification at igi.org



May 28, 2025
IGI Report Number **LG710555758**
Description **LABORATORY GROWN DIAMOND**
Shape and Cutting Style **ROSE CUT**
Measurements **9.47 X 9.53 X 2.69 MM**

GRADING RESULTS

Carat Weight **2.21 CARATS**
Color Grade **D**
Clarity Grade **VS 1**

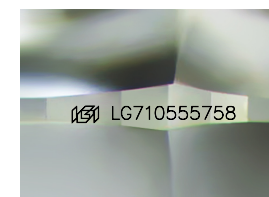
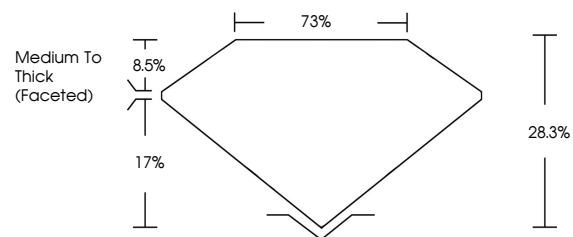
May 28, 2025
IGI Report Number **LG710555758**
Description **LABORATORY GROWN DIAMOND**
Shape and Cutting Style **ROSE CUT**
Measurements **9.47 X 9.53 X 2.69 MM**
GRADING RESULTS
Carat Weight **2.21 CARATS**
Color Grade **D**
Clarity Grade **VS 1**

ADDITIONAL GRADING INFORMATION

Polish **EXCELLENT**
Symmetry **EXCELLENT**
Fluorescence **NONE**
Inscription(s) **IGI LG710555758**

Comments: This Laboratory Grown Diamond was created by Chemical Vapor Deposition (CVD) growth process.
Type IIa

PROPORTIONS



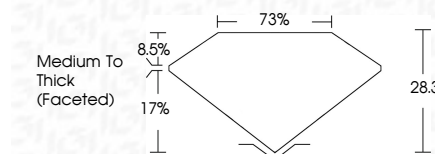
Sample Image Used

COLOR

D E F G H I J Faint Very Light Light

CLARITY

IF	WS ¹⁻²	VS ¹⁻²	SI ¹⁻²	I ¹⁻³
Internally Flawless	Very Very Slightly Included	Very Slightly Included	Slightly Included	Included



ADDITIONAL GRADING INFORMATION

Polish **EXCELLENT**
Symmetry **EXCELLENT**
Fluorescence **NONE**
Inscription(s) **IGI LG710555758**
Comments: This Laboratory Grown Diamond was created by Chemical Vapor Deposition (CVD) growth process.
Type IIa



May 28, 2025
IGI Report No LG710555758
ROSE CUT
2.21 CARATS
Color Grade D
Clarity Grade VS 1
Table 73%
Depth 8.5%
Girdle Medium To Thick (Faceted)
Culet EXCELLENT
Polish EXCELLENT
Symmetry EXCELLENT
Fluorescence NONE
Inscription(s) IGI LG710555758
Comments: This Laboratory Grown Diamond was created by Chemical Vapor Deposition (CVD) growth process.
Type IIa