



ELECTRONIC COPY

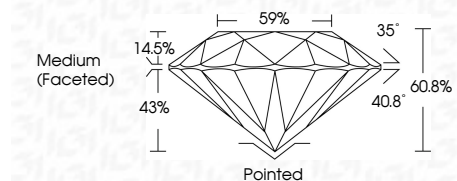
LG710555246
Report verification at igi.org



May 31, 2025
IGI Report Number **LG710555246**
Description **LABORATORY GROWN DIAMOND**
Shape and Cutting Style **ROUND BRILLIANT**
Measurements **9.33 - 9.36 X 5.68 MM**

GRADING RESULTS

Carat Weight **3.03 CARATS**
Color Grade **F**
Clarity Grade **VVS 2**
Cut Grade **IDEAL**



ADDITIONAL GRADING INFORMATION

Polish **EXCELLENT**
Symmetry **EXCELLENT**
Fluorescence **NONE**
Inscription(s) **IGI LG710555246**
Comments: This Laboratory Grown Diamond was created by Chemical Vapor Deposition (CVD) growth process.
Type IIa



May 31, 2025
IGI Report No LG710555246
ROUND BRILLIANT
9.33 - 9.36 X 5.68 MM
3.03 CARATS
F
VVS 2
IDEAL
60.8%
59%
Medium (Faceted)
Pointed
EXCELLENT
EXCELLENT
NONE
IGI LG710555246
Comments: This Laboratory Grown Diamond was created by Chemical Vapor Deposition (CVD) growth process.
Type IIa

LABORATORY GROWN DIAMOND REPORT

May 31, 2025
IGI Report Number **LG710555246**
Description **LABORATORY GROWN DIAMOND**
Shape and Cutting Style **ROUND BRILLIANT**
Measurements **9.33 - 9.36 X 5.68 MM**

GRADING RESULTS

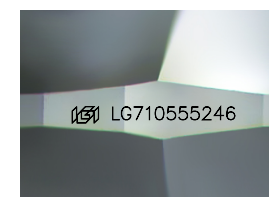
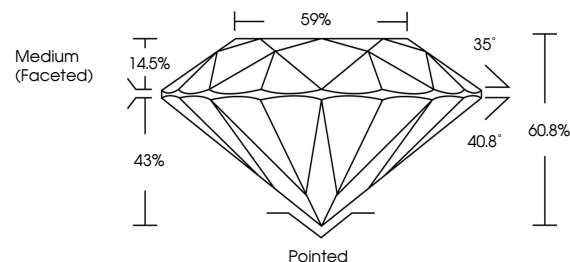
Carat Weight **3.03 CARATS**
Color Grade **F**
Clarity Grade **VVS 2**
Cut Grade **IDEAL**

ADDITIONAL GRADING INFORMATION

Polish **EXCELLENT**
Symmetry **EXCELLENT**
Fluorescence **NONE**
Inscription(s) **IGI LG710555246**

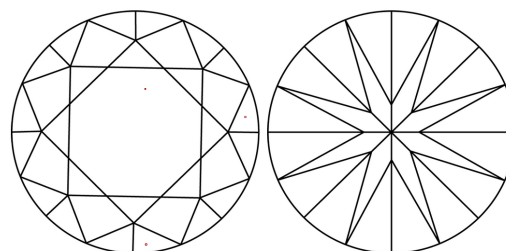
Comments: This Laboratory Grown Diamond was created by Chemical Vapor Deposition (CVD) growth process.
Type IIa

PROPORTIONS



Sample Image Used

CLARITY CHARACTERISTICS



KEY TO SYMBOLS

Red symbols indicate internal characteristics.
Green symbols indicate external characteristics.

COLOR

D E F G H I J Faint Very Light Light

CLARITY

IF WS¹⁻² VS¹⁻² SI¹⁻² I¹⁻³
Internally Flawless Very Very Slightly Included Very Slightly Included Slightly Included Included

