



**ELECTRONIC COPY**

LG710554874  
Report verification at igi.org



June 3, 2025  
IGI Report Number **LG710554874**  
Description **LABORATORY GROWN DIAMOND**  
Shape and Cutting Style **ROUND BRILLIANT**  
Measurements **8.21 - 8.28 X 4.94 MM**  
**GRADING RESULTS**  
Carat Weight **2.03 CARATS**  
Color Grade **FANCY INTENSE PINK**  
Clarity Grade **VVS 2**  
Cut Grade **IDEAL**

June 3, 2025  
IGI Report Number **LG710554874**  
Description **LABORATORY GROWN DIAMOND**  
Shape and Cutting Style **ROUND BRILLIANT**  
Measurements **8.21 - 8.28 X 4.94 MM**

**GRADING RESULTS**

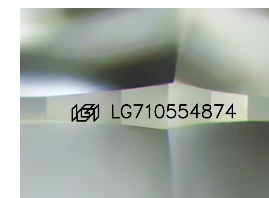
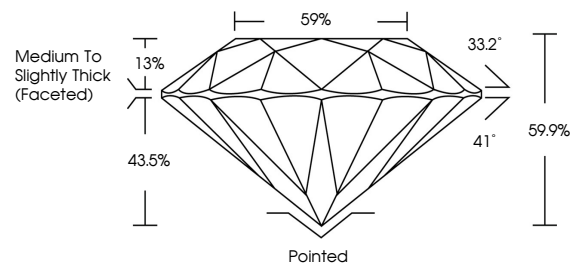
Carat Weight **2.03 CARATS**  
Color Grade **FANCY INTENSE PINK**  
Clarity Grade **VVS 2**  
Cut Grade **IDEAL**

**ADDITIONAL GRADING INFORMATION**

Polish **VERY GOOD**  
Symmetry **EXCELLENT**  
Fluorescence **SLIGHT**  
Inscription(s) **IGI LG710554874**

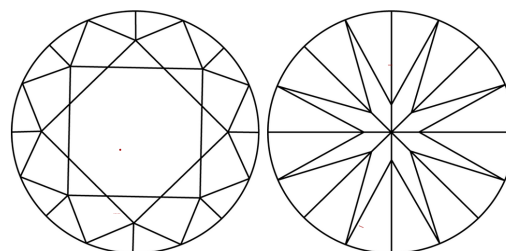
Comments: This Laboratory Grown Diamond was created by Chemical Vapor Deposition (CVD) growth process.  
Indications of post-growth treatment.

**PROPORTIONS**



Sample Image Used

**CLARITY CHARACTERISTICS**



**KEY TO SYMBOLS**

Red symbols indicate internal characteristics.  
Green symbols indicate external characteristics.

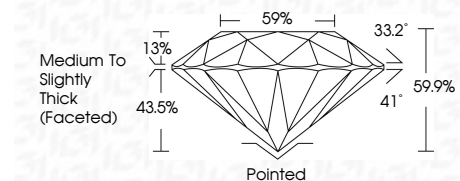
**COLOR**

D E F G H I J Faint Very Light Light

**CLARITY**

IF WS<sup>1-2</sup> VS<sup>1-2</sup> SI<sup>1-2</sup> I<sup>1-3</sup>

Internally Flawless Very Very Slightly Included Very Slightly Included Slightly Included Included



**ADDITIONAL GRADING INFORMATION**

Polish **VERY GOOD**  
Symmetry **EXCELLENT**  
Fluorescence **SLIGHT**  
Inscription(s) **IGI LG710554874**  
Comments: This Laboratory Grown Diamond was created by Chemical Vapor Deposition (CVD) growth process.  
Indications of post-growth treatment.



June 3, 2025  
IGI Report No LG710554874  
**ROUND BRILLIANT**  
**8.21 - 8.28 X 4.94 MM**  
**2.03 CARATS**  
**FANCY INTENSE PINK**  
**VVS 2**  
**IDEAL**  
**59.9%**  
**59%**  
**Medium To Slightly Thick (Faceted)**  
**Pointed**  
**VERY GOOD**  
**EXCELLENT**  
**SLIGHT**  
**IGI LG710554874**  
Comments: This Laboratory Grown Diamond was created by Chemical Vapor Deposition (CVD) growth process.  
Indications of post-growth treatment.