



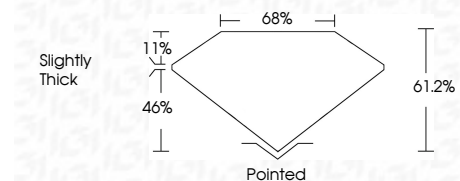
ELECTRONIC COPY

LG710553137
Report verification at igi.org



June 10, 2025
IGI Report Number LG710553137
Description LABORATORY GROWN DIAMOND
Shape and Cutting Style CUT CORNERED SQUARE MODIFIED BRILLIANT
Measurements 7.76 X 7.73 X 4.73 MM

GRADING RESULTS
Carat Weight 2.60 CARATS
Color Grade D
Clarity Grade VVS 2



ADDITIONAL GRADING INFORMATION
Polish EXCELLENT
Symmetry EXCELLENT
Fluorescence NONE
Inscription(s) IGI LG710553137
Comments: This Laboratory Grown Diamond was created by Chemical Vapor Deposition (CVD) growth process. Type IIa



LABORATORY GROWN DIAMOND REPORT

June 10, 2025
IGI Report Number LG710553137
Description LABORATORY GROWN DIAMOND
Shape and Cutting Style CUT CORNERED SQUARE MODIFIED BRILLIANT
Measurements 7.76 X 7.73 X 4.73 MM

GRADING RESULTS

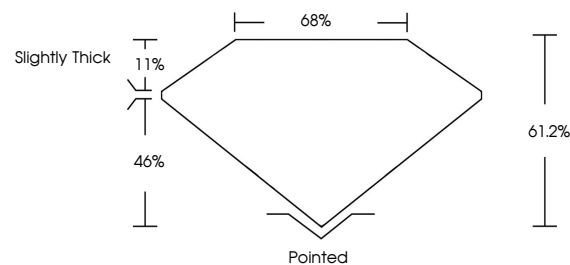
Carat Weight 2.60 CARATS
Color Grade D
Clarity Grade VVS 2

ADDITIONAL GRADING INFORMATION

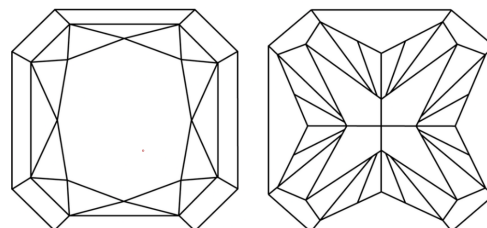
Polish EXCELLENT
Symmetry EXCELLENT
Fluorescence NONE
Inscription(s) IGI LG710553137

Comments: This Laboratory Grown Diamond was created by Chemical Vapor Deposition (CVD) growth process. Type IIa

PROPORTIONS

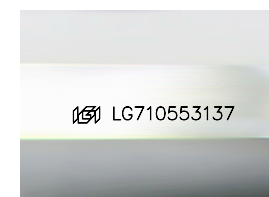


CLARITY CHARACTERISTICS



KEY TO SYMBOLS

Red symbols indicate internal characteristics.
Green symbols indicate external characteristics.



Sample Image Used

COLOR

D E F G H I J Faint Very Light Light

CLARITY

IF WS 1-2 VS 1-2 SI 1-2 I 1-3
Internally Flawless Very Very Slightly Included Very Slightly Included Slightly Included Included

Summary of report details including date, report number, description, measurements, grading results, and additional information.

Comments: This Laboratory Grown Diamond was created by Chemical Vapor Deposition (CVD) growth process. Type IIa