



ELECTRONIC COPY

LG710547465
Report verification at igi.org



May 26, 2025

IGI Report Number **LG710547465**

Description **LABORATORY GROWN DIAMOND**

Shape and Cutting Style **EMERALD CUT**

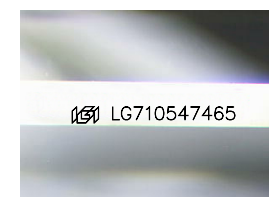
Measurements **7.17 X 5.01 X 3.38 MM**

GRADING RESULTS

Carat Weight **1.24 CARAT**

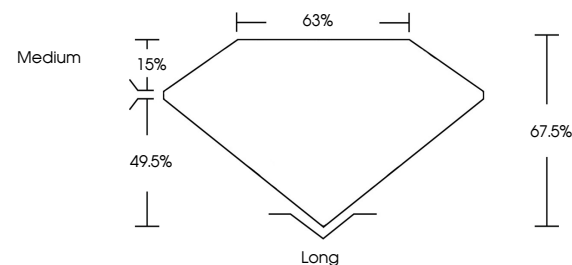
Color Grade **FANCY INTENSE PINK**

Clarity Grade **VS 1**

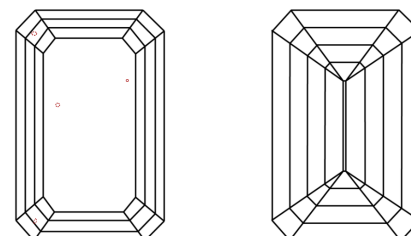


Sample Image Used

PROPORTIONS



CLARITY CHARACTERISTICS



KEY TO SYMBOLS

Red symbols indicate internal characteristics.
Green symbols indicate external characteristics.

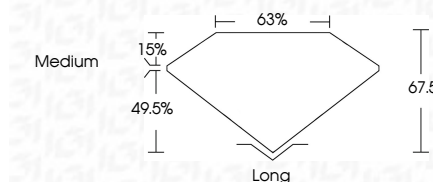
COLOR

D E F G H I J Faint Very Light Light

CLARITY

IF VS¹⁻² VS¹⁻² SI¹⁻² I¹⁻³

Internally Flawless Very Very Slightly Included Very Slightly Included Slightly Included Included



ADDITIONAL GRADING INFORMATION

Polish **EXCELLENT**

Symmetry **EXCELLENT**

Fluorescence **SLIGHT**

Inscription(s) **IGI LG710547465**

Comments: This Laboratory Grown Diamond was created by Chemical Vapor Deposition (CVD) growth process.

Indications of post-growth treatment.

Secondary color: Brown



IGI



May 26, 2025
IGI Report No LG710547465
EMERALD CUT
1.24 CARAT
FANCY INTENSE PINK
VS 1
67.5%
63%
Medium
Long
EXCELLENT
EXCELLENT
SLIGHT
IGI LG710547465
Comments: This Laboratory Grown Diamond was created by Chemical Vapor Deposition (CVD) growth process. Indications of post-growth treatment. Secondary color: Brown