

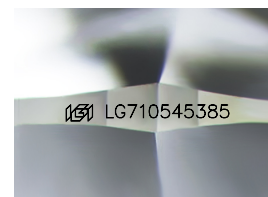
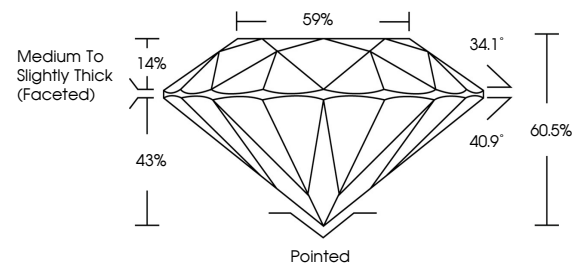


ELECTRONIC COPY

LABORATORY GROWN DIAMOND REPORT

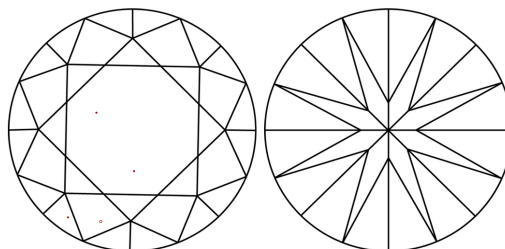
LG710545385
Report verification at igi.org

PROPORTIONS



Sample Image Used

CLARITY CHARACTERISTICS



KEY TO SYMBOLS

Red symbols indicate internal characteristics.
Green symbols indicate external characteristics.

COLOR

D E F G H I J Faint Very Light Light

CLARITY

IF WS¹⁻² VS¹⁻² SI¹⁻² |¹⁻³

Internally Flawless	Very Very Slightly Included	Very Slightly Included	Slightly Included	Included
------------------------	--------------------------------	---------------------------	----------------------	----------



May 29, 2025

IGI Report Number **LG710545385**

Description	LABORATORY GROWN DIAMOND
-------------	--------------------------

Shape and Cutting Style **ROUND BRILLIANT**

Measurements **9.34 - 9.37 X 5.66 MM**

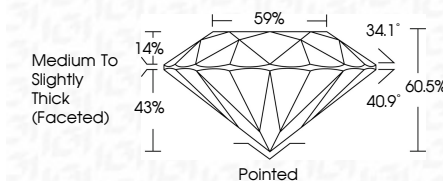
GRADING RESULTS

Carat Weight **3.02 CARATS**

Color Grade E

Clarity Grade **VVS 2**

Cut Grade **IDEAL**



ADDITIONAL GRADING INFORMATION

Polish **EXCELLENT**Symmetry **EXCELLENT**Fluorescence **NONE**Inscription(s) LG710545385

Comments: This Laboratory Grown Diamond was created by Chemical Vapor Deposition (CVD) growth process.

Type IIa



© IGI 2020, International Gemological Institute

FD - 10 20

www.igi.org



THIS DOCUMENT WAS PRODUCED WITH THE FOLLOWING SECURITY MEASURES: SPECIAL DOCUMENT PAPER, INK SCREENS, WATERMARK, BACKGROUND DESIGNS, HOLOGRAM AND OTHER SECURITY FEATURES NOT LISTED AND DO EXCEED DOCUMENT SECURITY INDUSTRY GUIDELINE

May 29, 2026	IGI Report No. LG71054395	3.02 CARATS	WVS 2
ROUND BRILLIANT			IDEAL
			60.0%
			99%
			Medium to Slightly Thick (faceted)
			Painted
			EXCELLENT
			EXCELLENT
			NONE
			#61 LG71054395
			Comments:
			This Laboratory Growth Diamond was created by Chemical Vapor Deposition (CVD) growth process.
			Type IIA