

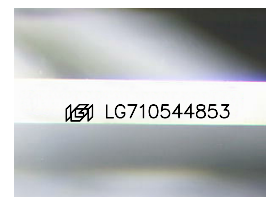
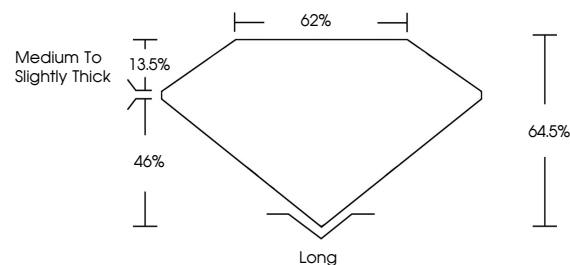


ELECTRONIC COPY

LABORATORY GROWN DIAMOND REPORT

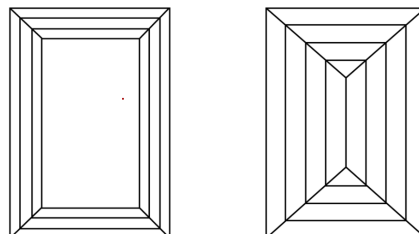
LG710544853
Report verification at igi.org

PROPORTIONS



Sample Image Used

CLARITY CHARACTERISTICS



KEY TO SYMBOLS

Red symbols indicate internal characteristics.
Green symbols indicate external characteristics.

COLOR

D E F G H I J Faint Very Light Light

CLARITY

IF VWS¹⁻² VS¹⁻² SI¹⁻² I¹⁻³

Internally Flawless	Very Very Slightly Included	Very Slightly Included	Slightly Included	Included
---------------------	-----------------------------	------------------------	-------------------	----------

LABORATORY GROWN DIAMOND REPORT



June 6, 2025

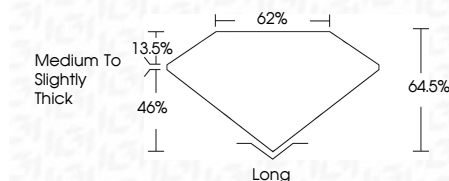
IGI Report Number **LG710544853**Description **LABORATORY GROWN DIAMOND**Shape and Cutting Style **BAGUETTE**

Measurements **8.30 X 4.09 X 2.64 MM**

GRADING RESULTS

Carat Weight **1.04 CARAT**

Color Grade F

Clarity Grade VVS 2

ADDITIONAL GRADING INFORMATION

Polish EXCELLENT

Symmetry **EXCELLENT**Fluorescence **NONE**Inscription(s) **13** LG710544853

Comments: This Laboratory Grown Diamond was created by Chemical Vapor Deposition (CVD) growth process.
Type IIa



www.igi.org

© IGI 2020, International Gemological Institute

FD - 10 20



THIS DOCUMENT WAS PRODUCED WITH THE FOLLOWING SECURITY MEASURES: SPECIAL DOCUMENT PAPER, INK SCREENS, WATERMARK, BACKGROUND DESIGNS, HOLOGRAM AND OTHER SECURITY FEATURES NOT LISTED AND DO EXCEED DOCUMENT SECURITY INDUSTRY GUIDELINES

June 6, 2025
GJ Report No | G710544853

<p> Report No 12710544863 DATE 12/10/2019 AGENTS </p>	<p> Carat Weight Color Grade Clarity Grade Depth Table Grade </p>	<p> 1.04 CARAT F VVS 2 64.6% 62% Medium To Slightly Thick </p>	<p> Long Excellent Excellent None sent (2710544863) </p>
--	--	---	---

Comments:
This Laboratory Grown Diamond was
created by Chemical Vapor Deposition
(CVD) growth process.