



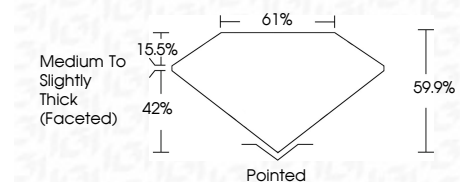
ELECTRONIC COPY

LG710543652
Report verification at igi.org



June 13, 2025
IGI Report Number **LG710543652**
Description **LABORATORY GROWN DIAMOND**
Shape and Cutting Style **ROUND MODIFIED BRILLIANT**
Measurements **8.69 - 8.68 X 5.20 MM**

GRADING RESULTS
Carat Weight **2.65 CARATS**
Color Grade **FANCY INTENSE PINK**
Clarity Grade **VS 1**

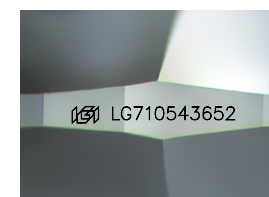


ADDITIONAL GRADING INFORMATION
Polish **EXCELLENT**
Symmetry **EXCELLENT**
Fluorescence **SLIGHT**
Inscription(s) **IGI LG710543652**
Comments: This Laboratory Grown Diamond was created by Chemical Vapor Deposition (CVD) growth process. Indications of post-growth treatment.



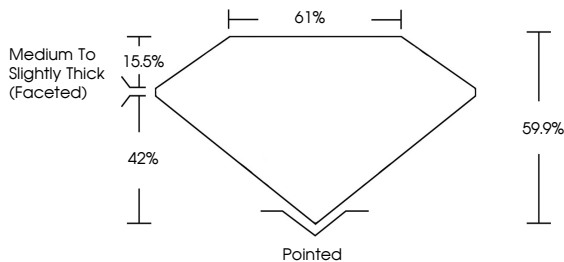
June 13, 2025
IGI Report No LG710543652
ROUND MODIFIED BRILLIANT
8.69 - 8.68 X 5.20 MM
2.65 CARATS
FANCY INTENSE PINK
VS 1
61%
59.9%
Medium to Slightly Thick (Faceted)
Pointed
EXCELLENT
EXCELLENT
SLIGHT
IGI LG710543652

Comments: This Laboratory Grown Diamond was created by Chemical Vapor Deposition (CVD) growth process. Indications of post-growth treatment.

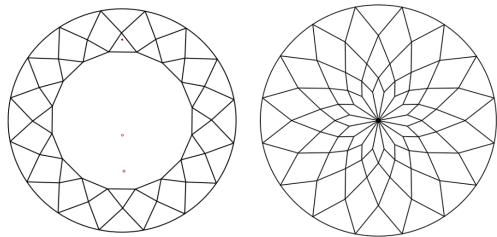


Sample Image Used

PROPORTIONS



CLARITY CHARACTERISTICS



KEY TO SYMBOLS
Red symbols indicate internal characteristics.
Green symbols indicate external characteristics.

COLOR

D	E	F	G	H	I	J	Faint	Very Light	Light
---	---	---	---	---	---	---	-------	------------	-------

CLARITY

IF	VS ¹⁻²	VS ¹⁻²	SI ¹⁻²	I ¹⁻³
Internally Flawless	Very Very Slightly Included	Very Slightly Included	Slightly Included	Included

