



ELECTRONIC COPY

LG710543625
Report verification at igi.org



June 10, 2025
IGI Report Number **LG710543625**
Description **LABORATORY GROWN DIAMOND**
Shape and Cutting Style **CUSHION MODIFIED BRILLIANT**
Measurements **7.50 X 6.38 X 4.26 MM**
GRADING RESULTS
Carat Weight **1.51 CARAT**
Color Grade **FANCY VIVID BLUE**
Clarity Grade **VS 1**

LABORATORY GROWN DIAMOND REPORT

June 10, 2025
IGI Report Number **LG710543625**
Description **LABORATORY GROWN DIAMOND**
Shape and Cutting Style **CUSHION MODIFIED BRILLIANT**
Measurements **7.50 X 6.38 X 4.26 MM**

GRADING RESULTS

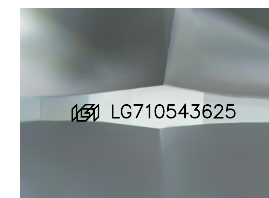
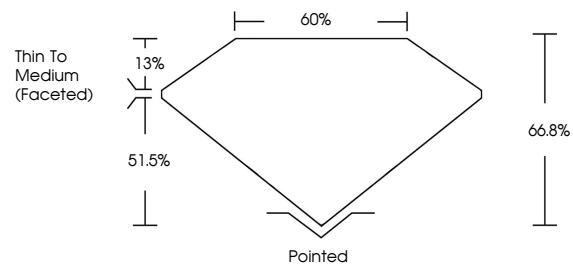
Carat Weight **1.51 CARAT**
Color Grade **FANCY VIVID BLUE**
Clarity Grade **VS 1**

ADDITIONAL GRADING INFORMATION

Polish **EXCELLENT**
Symmetry **EXCELLENT**
Fluorescence **NONE**
Inscription(s) **IGI LG710543625**

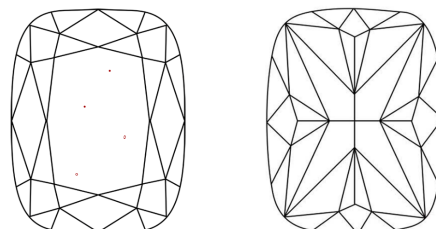
Comments: This Laboratory Grown Diamond was created by Chemical Vapor Deposition (CVD) growth process.
Indications of post-growth treatment.

PROPORTIONS



Sample Image Used

CLARITY CHARACTERISTICS



KEY TO SYMBOLS

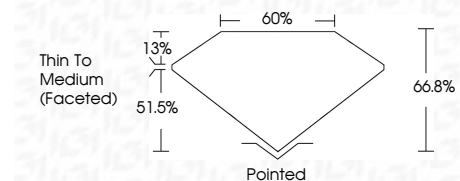
Red symbols indicate internal characteristics.
Green symbols indicate external characteristics.

COLOR

D E F G H I J Faint Very Light Light

CLARITY

IF	VS ¹⁻²	VS ¹⁻²	SI ¹⁻²	I ¹⁻³
Internally Flawless	Very Very Slightly Included	Very Slightly Included	Slightly Included	Included



ADDITIONAL GRADING INFORMATION

Polish **EXCELLENT**
Symmetry **EXCELLENT**
Fluorescence **NONE**
Inscription(s) **IGI LG710543625**
Comments: This Laboratory Grown Diamond was created by Chemical Vapor Deposition (CVD) growth process.
Indications of post-growth treatment.



June 10, 2025
IGI Report No LG710543625
CUSHION MODIFIED BRILLIANT
1.51 CARAT
Carat Weight
Color Grade FANCY VIVID BLUE
Clarity Grade VS 1
Depth 66.8%
Table 51.5%
Girdle
Thin To Medium (Faceted)
Pointed
Polish EXCELLENT
Symmetry EXCELLENT
Fluorescence NONE
Inscription(s) IGI LG710543625
Comments: This Laboratory Grown Diamond was created by Chemical Vapor Deposition (CVD) growth process.
Indications of post-growth treatment.