



**ELECTRONIC COPY**

## LABORATORY GROWN DIAMOND REPORT

LG710543346  
Report verification at [igi.org](https://igi.org)

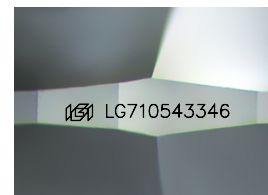
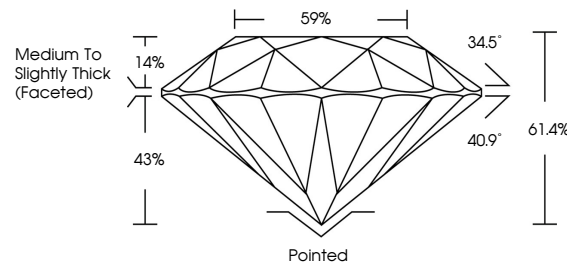
May 21, 2025	
IGI Report Number	LG710543346
Description	LABORATORY GROWN DIAMOND
Shape and Cutting Style	ROUND BRILLIANT
Measurements	6.81 - 6.86 X 4.20 MM
GRADING RESULTS	
Carat Weight	1.22 CARAT
Color Grade	D
Clarity Grade	VS 1
Cut Grade	IDEAL

### ADDITIONAL GRADING INFORMATION

Polish	EXCELLENT
Symmetry	EXCELLENT
Fluorescence	NONE
Inscription(s)	15 LG710543346

Comments: As Grown - No indication of post-growth treatment.  
This Laboratory Grown Diamond was created by High Pressure High Temperature (HPHT) growth process.  
Type II

## PROPORTIONS



Sample Image Used

## COLOR

D E F G H I J Faint Very Light Light

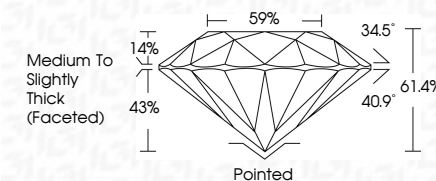
## CLARITY

IF	VS <sup>1-2</sup>	VS <sup>1-2</sup>	SI <sup>1-2</sup>	I <sup>1-3</sup>
Internally Flawless	Very Very Slightly Included	Very Slightly Included	Slightly Included	Included

## LABORATORY GROWN DIAMOND REPORT



May 21, 2025	
IGI Report Number	LG710543346
Description	LABORATORY GROWN DIAMOND
Shape and Cutting Style	ROUND BRILLIANT
Measurements	6.81 - 6.86 X 4.20 MM
GRADING RESULTS	
Carat Weight	1.22 CARAT
Color Grade	D
Clarity Grade	VS 1
Cut Grade	IDEAL



### ADDITIONAL GRADING INFORMATION

Polish	EXCELLENT
Symmetry	EXCELLENT
Fluorescence	NONE
Inscription(s)	<del>(G)</del> LG710543346
<p>Comments: As Grown - No indication of post-growth treatment.</p> <p>This Laboratory Grown Diamond was created by High Pressure High Temperature (HPHT) growth process.</p> <p>Type II</p>	



IG



© IGI 2020, International Gemological Institute

FD - 10 20

**www.igi.org**



THIS DOCUMENT WAS PRODUCED WITH THE FOLLOWING SECURITY MEASURES: SPECIAL DOCUMENT PAPER, INK SCREENS, WATERMARK, BACKGROUND DESIGNS, HOLOGRAM AND OTHER SECURITY FEATURES NOT LISTED AND DO EXCEED DOCUMENT SECURITY INDUSTRY GUIDELINE

May 21, 2025	Carat Weight	VS 1		1.22 CARAT
Report No. G9710543346	Color Grade	IDEAL		D
ROUND BRILLIANT	Clarity Grade	61.6%		
3.81 - 3.85 X 4.20 MM	Cut Grade	59%		
	Depth	Medium to Slightly Thick Faceted		
	Table			
	Grades			
	Culet			
	Polish			
	Symmetry			
	Fluorescence			
	Inscription(s)			
<p>Comments: As Grown - No indication of post-growth treatment.</p> <p>This Laboratory Grown Diamond was created by High Pressure High Temperature (HPHT) growth process.</p> <p>Report No. G9710543346</p>				