



ELECTRONIC COPY

LABORATORY GROWN DIAMOND REPORT

LG710543212
Report verification at igi.org

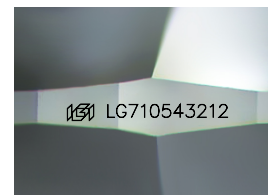
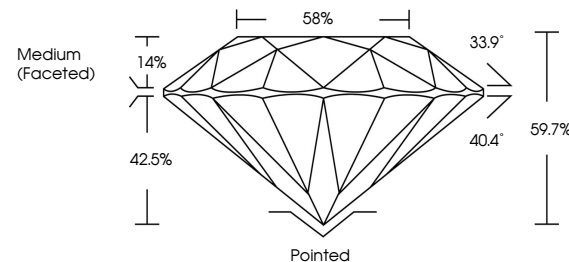
May 22, 2025	
IGI Report Number	LG710543212
Description	LABORATORY GROWN DIAMOND
Shape and Cutting Style	ROUND BRILLIANT
Measurements	6.96 - 6.98 X 4.16 MM
GRADING RESULTS	
Carat Weight	1.23 CARAT
Color Grade	D
Clarity Grade	VS 1
Cut Grade	IDEAL

ADDITIONAL GRADING INFORMATION

Polish	EXCELLENT
Symmetry	EXCELLENT
Fluorescence	NONE
Inscription(s)	15 LG710543212

Comments: As Grown - No indication of post-growth treatment.
This Laboratory Grown Diamond was created by High Pressure High Temperature (HPHT) growth process.
Type II

PROPORTIONS



Sample Image Used

COLOR

D E F G H I J Faint Very Light Light

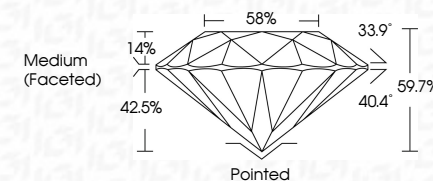
CLARITY

IF	VVS ¹⁻²	VS ¹⁻²	SI ¹⁻²	I ¹⁻³
Internally Flawless	Very Very Slightly Included	Very Slightly Included	Slightly Included	Included

LABORATORY GROWN DIAMOND REPORT



May 22, 2025	
IGI Report Number	LG710543212
Description	LABORATORY GROWN DIAMOND
Shape and Cutting Style	ROUND BRILLIANT
Measurements	6.96 - 6.98 X 4.16 MM
GRADING RESULTS	
Carat Weight	1.23 CARAT
Color Grade	D
Clarity Grade	VS 1
Cut Grade	IDEAL



ADDITIONAL GRADING INFORMATION

Polish	EXCELLENT
Symmetry	EXCELLENT
Fluorescence	NONE
Inscription(s)	165 LG710543212
Comments: As Grown - No indication of post-growth treatment.	
This Laboratory Grown Diamond was created by High Pressure High Temperature (HPHT) growth process.	
Type II	



© IGI 2020, International Gemological Institute

FD - 10 20

www.igi.org



THIS DOCUMENT WAS PRODUCED WITH THE FOLLOWING SECURITY MEASURES: SPECIAL DOCUMENT PAPER, INK SCREENS, WATERMARK, BACKGROUND DESIGNS, HOLOGRAM AND OTHER SECURITY FEATURES NOT LISTED AND DO EXCEED DOCUMENT SECURITY INDUSTRY GUIDELINE

May 22, 2025
GI Report No LG710543212

LG1 Report No LG71
POLYIND BRILLIANT

ROUND BRILLIANT
5.96 - 6.98 X 4.16 MM

0.96 - 0.98 X 4.10 MM
Carat Weight 1.23 CARAT

D

Color Grade

Clarity Grade	VS 1
VS 1	

Cut Grade	IDEAL
Depth	59.7%

Dep III	64.7%
Table	58%

Girdle

Culet	Pointed
-------	---------

Cut	Pointed
Polish	EXCELLENT

	EXCELLENT	NONE
Symmetry		
Fluorescence		

Fluorescence	NONE
Inscription(s)	151 LG710543212

Comments:

Key words: 100-102-11

Comments:
As Grown - No Indication of post-growth

treatment. This Laboratory Grown Diamond was created by L'Oré Dressing Lith.

created by High Pressure High Temperature (HPHT) growth process.

type II