



ELECTRONIC COPY

LABORATORY GROWN DIAMOND REPORT

LG710543206
Report verification at igi.org

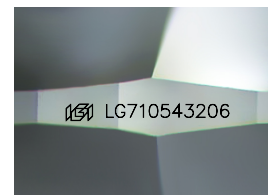
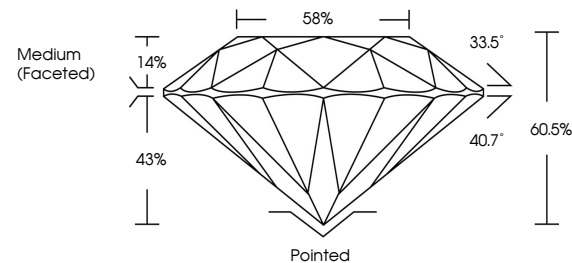
May 22, 2025	
IGI Report Number	LG710543206
Description	LABORATORY GROWN DIAMOND
Shape and Cutting Style	ROUND BRILLIANT
Measurements	6.89 - 6.95 X 4.19 MM
GRADING RESULTS	
Carat Weight	1.23 CARAT
Color Grade	D
Clarity Grade	VS 1
Cut Grade	IDEAL

ADDITIONAL GRADING INFORMATION

Polish	EXCELLENT
Symmetry	EXCELLENT
Fluorescence	NONE
Inscription(s)	 LG710543206

Comments: As Grown - No indication of post-growth treatment.
This Laboratory Grown Diamond was created by High Pressure High Temperature (HPHT) growth process.
Type II

PROPORTIONS



Sample Image Used

COLOR

D E F G H I J Faint Very Light Light

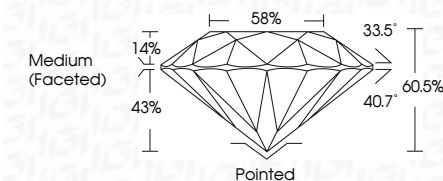
CLARITY

IF	VS ¹⁻²	VS ¹⁻²	SI ¹⁻²	I ¹⁻³
Internally Flawless	Very Very Slightly Included	Very Slightly Included	Slightly Included	Included

LABORATORY GROWN DIAMOND REPORT



May 22, 2025	
IGI Report Number	LG710543206
Description	LABORATORY GROWN DIAMOND
Shape and Cutting Style	ROUND BRILLIANT
Measurements	6.89 - 6.95 X 4.19 MM
GRADING RESULTS	
Carat Weight	1.23 CARAT
Color Grade	D
Clarity Grade	VS 1
Cut Grade	IDEAL



ADDITIONAL GRADING INFORMATION

Polish	EXCELLENT
Symmetry	EXCELLENT
Fluorescence	NONE
Inscription(s)	(G) LG710543206
Comments: As Grown - No indication of post-growth treatment.	
This Laboratory Grown Diamond was created by High Pressure High Temperature (HPHT) growth process.	
Type II	



© IGI 2020, International Gemological Institute

FD - 10 20



THIS DOCUMENT WAS PRODUCED WITH THE FOLLOWING SECURITY MEASURES: SPECIAL DOCUMENT PAPER, INK SCREENS, WATERMARK, BACKGROUND DESIGNS, HOLOGRAM AND OTHER SECURITY FEATURES NOT LISTED AND DO EXCEED DOCUMENT SECURITY INDUSTRY GUIDELINES

www.igi.org

May 22, 2025	Report No LG710543206	
ROUND BRILLIANT		
ASPP - 6.95 X 4.19 MM		
Carat Weight	Carat	1.23 CARAT
Color Grade	D	
Clarity Grade	VS 1	
Cut Grade	IDEAL	
Depth	60.5%	
Table	58%	
Girdle	Medium (Facetted)	
Culet	Pointed	
Pavil	EXCELLENT	
Symmetry	EXCELLENT	
Fluorescence	NONE	
Inscriptions(s)	None	
	ISS: LG710543206	
Comments:	<p>No Growth - No indication of post-growth This Laboratory Growth Diamond was created by High Pressure High Temperature (HPHT) growth process.</p>	