



ELECTRONIC COPY

LABORATORY GROWN DIAMOND REPORT

LG710543156
Report verification at igi.org

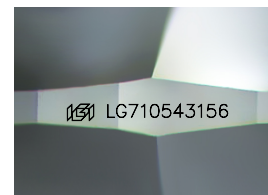
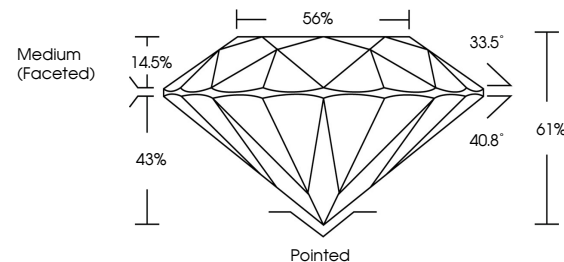
May 21, 2025	
IGI Report Number	LG710543156
Description	LABORATORY GROWN DIAMOND
Shape and Cutting Style	ROUND BRILLIANT
Measurements	6.92 - 6.95 X 4.23 MM
GRADING RESULTS	
Carat Weight	1.23 CARAT
Color Grade	D
Clarity Grade	VS 1
Cut Grade	IDEAL

ADDITIONAL GRADING INFORMATION

Polish	EXCELLENT
Symmetry	EXCELLENT
Fluorescence	NONE
Inscription(s)	15 LG710543156

Comments: As Grown - No indication of post-growth treatment.
This Laboratory Grown Diamond was created by High Pressure High Temperature (HPHT) growth process.
Type II

PROPORTIONS



Sample Image Used

COLOR

D E F G H I J Faint Very Light Light

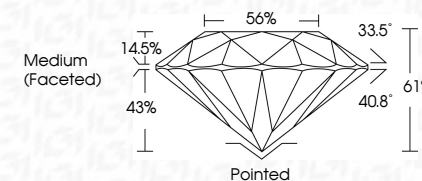
CLARITY

IF	VVS ¹⁻²	VS ¹⁻²	SI ¹⁻²	I ¹⁻³
Internally Flawless	Very Very Slightly Included	Very Slightly Included	Slightly Included	Included

LABORATORY GROWN DIAMOND REPORT



May 21, 2025	
IGI Report Number	LG710543156
Description	LABORATORY GROWN DIAMOND
Shape and Cutting Style	ROUND BRILLIANT
Measurements	6.92 - 6.95 X 4.23 MM
GRADING RESULTS	
Carat Weight	1.23 CARAT
Color Grade	D
Clarity Grade	VS 1
Cut Grade	IDEAL



ADDITIONAL GRADING INFORMATION

Polish	EXCELLENT
Symmetry	EXCELLENT
Fluorescence	NONE
Inscription(s)	 LG710543156
Comments: As Grown - No indication of post-growth treatment.	
This Laboratory Grown Diamond was created by High Pressure High Temperature (HPHT) growth process.	
Type II	



© IGI 2020, International Gemological Institute

FD - 10 20

www.igi.org



THIS DOCUMENT WAS PRODUCED WITH THE FOLLOWING SECURITY MEASURES: SPECIAL DOCUMENT PAPER, INK SCREENS, WATERMARK, BACKGROUND DESIGNS, HOLOGRAM AND OTHER SECURITY FEATURES NOT LISTED AND DO EXCEED DOCUMENT SECURITY INDUSTRY GUIDELINE

May 21, 2025
 LGI Report No LG710543156
 ROUND BRILLIANT

5.92 - 6.95 X 4.23 MM

3.92 - 6.95 X 4.23 MM
1.23 CARAT
Carat Weight

Catal Weight%	D
Color Grade	

Clarity Grade	VS 1
VS 1	

Clarity Grade	VS 1	VS 2	VS 3	VS 4	VS 5	VS 6	VS 7	VS 8	VS 9	VS 10	VS 11	VS 12	VS 13	VS 14	VS 15	VS 16	VS 17	VS 18	VS 19	VS 20	VS 21	VS 22	VS 23	VS 24	VS 25	VS 26	VS 27	VS 28	VS 29	VS 30	VS 31	VS 32	VS 33	VS 34	VS 35	VS 36	VS 37	VS 38	VS 39	VS 40	VS 41	VS 42	VS 43	VS 44	VS 45	VS 46	VS 47	VS 48	VS 49	VS 50	VS 51	VS 52	VS 53	VS 54	VS 55	VS 56	VS 57	VS 58	VS 59	VS 60	VS 61	VS 62	VS 63	VS 64	VS 65	VS 66	VS 67	VS 68	VS 69	VS 70	VS 71	VS 72	VS 73	VS 74	VS 75	VS 76	VS 77	VS 78	VS 79	VS 80	VS 81	VS 82	VS 83	VS 84	VS 85	VS 86	VS 87	VS 88	VS 89	VS 90	VS 91	VS 92	VS 93	VS 94	VS 95	VS 96	VS 97	VS 98	VS 99	VS 100	VS 101	VS 102	VS 103	VS 104	VS 105	VS 106	VS 107	VS 108	VS 109	VS 110	VS 111	VS 112	VS 113	VS 114	VS 115	VS 116	VS 117	VS 118	VS 119	VS 120	VS 121	VS 122	VS 123	VS 124	VS 125	VS 126	VS 127	VS 128	VS 129	VS 130	VS 131	VS 132	VS 133	VS 134	VS 135	VS 136	VS 137	VS 138	VS 139	VS 140	VS 141	VS 142	VS 143	VS 144	VS 145	VS 146	VS 147	VS 148	VS 149	VS 150	VS 151	VS 152	VS 153	VS 154	VS 155	VS 156	VS 157	VS 158	VS 159	VS 160	VS 161	VS 162	VS 163	VS 164	VS 165	VS 166	VS 167	VS 168	VS 169	VS 170	VS 171	VS 172	VS 173	VS 174	VS 175	VS 176	VS 177	VS 178	VS 179	VS 180	VS 181	VS 182	VS 183	VS 184	VS 185	VS 186	VS 187	VS 188	VS 189	VS 190	VS 191	VS 192	VS 193	VS 194	VS 195	VS 196	VS 197	VS 198	VS 199	VS 200	VS 201	VS 202	VS 203	VS 204	VS 205	VS 206	VS 207	VS 208	VS 209	VS 210	VS 211	VS 212	VS 213	VS 214	VS 215	VS 216	VS 217	VS 218	VS 219	VS 220	VS 221	VS 222	VS 223	VS 224	VS 225	VS 226	VS 227	VS 228	VS 229	VS 230	VS 231	VS 232	VS 233	VS 234	VS 235	VS 236	VS 237	VS 238	VS 239	VS 240	VS 241	VS 242	VS 243	VS 244	VS 245	VS 246	VS 247	VS 248	VS 249	VS 250	VS 251	VS 252	VS 253	VS 254	VS 255	VS 256	VS 257	VS 258	VS 259	VS 260	VS 261	VS 262	VS 263	VS 264	VS 265	VS 266	VS 267	VS 268	VS 269	VS 270	VS 271	VS 272	VS 273	VS 274	VS 275	VS 276	VS 277	VS 278	VS 279	VS 280	VS 281	VS 282	VS 283	VS 284	VS 285	VS 286	VS 287	VS 288	VS 289	VS 290	VS 291	VS 292	VS 293	VS 294	VS 295	VS 296	VS 297	VS 298	VS 299	VS 300	VS 301	VS 302	VS 303	VS 304	VS 305	VS 306	VS 307	VS 308	VS 309	VS 310	VS 311	VS 312	VS 313	VS 314	VS 315	VS 316	VS 317	VS 318	VS 319	VS 320	VS 321	VS 322	VS 323	VS 324	VS 325	VS 326	VS 327	VS 328	VS 329	VS 330	VS 331	VS 332	VS 333	VS 334	VS 335	VS 336	VS 337	VS 338	VS 339	VS 340	VS 341	VS 342	VS 343	VS 344	VS 345	VS 346	VS 347	VS 348	VS 349	VS 350	VS 351	VS 352	VS 353	VS 354	VS 355	VS 356	VS 357	VS 358	VS 359	VS 360	VS 361	VS 362	VS 363	VS 364	VS 365	VS 366	VS 367	VS 368	VS 369	VS 370	VS 371	VS 372	VS 373	VS 374	VS 375	VS 376	VS 377	VS 378	VS 379	VS 380	VS
---------------	------	------	------	------	------	------	------	------	------	-------	-------	-------	-------	-------	-------	-------	-------	-------	-------	-------	-------	-------	-------	-------	-------	-------	-------	-------	-------	-------	-------	-------	-------	-------	-------	-------	-------	-------	-------	-------	-------	-------	-------	-------	-------	-------	-------	-------	-------	-------	-------	-------	-------	-------	-------	-------	-------	-------	-------	-------	-------	-------	-------	-------	-------	-------	-------	-------	-------	-------	-------	-------	-------	-------	-------	-------	-------	-------	-------	-------	-------	-------	-------	-------	-------	-------	-------	-------	-------	-------	-------	-------	-------	-------	-------	-------	-------	-------	-------	--------	--------	--------	--------	--------	--------	--------	--------	--------	--------	--------	--------	--------	--------	--------	--------	--------	--------	--------	--------	--------	--------	--------	--------	--------	--------	--------	--------	--------	--------	--------	--------	--------	--------	--------	--------	--------	--------	--------	--------	--------	--------	--------	--------	--------	--------	--------	--------	--------	--------	--------	--------	--------	--------	--------	--------	--------	--------	--------	--------	--------	--------	--------	--------	--------	--------	--------	--------	--------	--------	--------	--------	--------	--------	--------	--------	--------	--------	--------	--------	--------	--------	--------	--------	--------	--------	--------	--------	--------	--------	--------	--------	--------	--------	--------	--------	--------	--------	--------	--------	--------	--------	--------	--------	--------	--------	--------	--------	--------	--------	--------	--------	--------	--------	--------	--------	--------	--------	--------	--------	--------	--------	--------	--------	--------	--------	--------	--------	--------	--------	--------	--------	--------	--------	--------	--------	--------	--------	--------	--------	--------	--------	--------	--------	--------	--------	--------	--------	--------	--------	--------	--------	--------	--------	--------	--------	--------	--------	--------	--------	--------	--------	--------	--------	--------	--------	--------	--------	--------	--------	--------	--------	--------	--------	--------	--------	--------	--------	--------	--------	--------	--------	--------	--------	--------	--------	--------	--------	--------	--------	--------	--------	--------	--------	--------	--------	--------	--------	--------	--------	--------	--------	--------	--------	--------	--------	--------	--------	--------	--------	--------	--------	--------	--------	--------	--------	--------	--------	--------	--------	--------	--------	--------	--------	--------	--------	--------	--------	--------	--------	--------	--------	--------	--------	--------	--------	--------	--------	--------	--------	--------	--------	--------	--------	--------	--------	--------	--------	--------	--------	--------	--------	--------	--------	--------	--------	--------	--------	--------	--------	--------	--------	--------	--------	--------	--------	--------	--------	--------	--------	--------	--------	--------	--------	--------	--------	--------	--------	--------	--------	--------	----

Depth	61%
-------	-----

Table	56%
Girdle	Medium Green

Girdle

	Culet	Pointed
1		
2		
3		
4		
5		
6		
7		
8		
9		
10		
11		
12		
13		
14		
15		
16		
17		
18		
19		
20		
21		
22		
23		
24		
25		
26		
27		
28		
29		
30		
31		
32		
33		
34		
35		
36		
37		
38		
39		
40		
41		
42		
43		
44		
45		
46		
47		
48		
49		
50		
51		
52		
53		
54		
55		
56		
57		
58		
59		
60		
61		
62		
63		
64		
65		
66		
67		
68		
69		
70		
71		
72		
73		
74		
75		
76		
77		
78		
79		
80		
81		
82		
83		
84		
85		
86		
87		
88		
89		
90		
91		
92		
93		
94		
95		
96		
97		
98		
99		
100		

Polished	Excellent
Polish	

Symmetry

Fluorescence	NONE
Inscription(s)	1681 G710543156

Inscription (\$) 150 LG/10643150

Comments:
As Grown - No Indication of post-arrowth

As Grown - No indication of post-growth treatment.

**This Laboratory Grown Diamond was
Created by High Pressure High**

Temperature (HPHT) growth process,
Type II