



**ELECTRONIC COPY**

LG710542915  
Report verification at igi.org



May 21, 2025

IGI Report Number **LG710542915**

Description **LABORATORY GROWN DIAMOND**

Shape and Cutting Style **ROUND BRILLIANT**

Measurements **7.23 - 7.29 X 4.48 MM**

**GRADING RESULTS**

Carat Weight **1.45 CARAT**

Color Grade **D**

Clarity Grade **VS 1**

Cut Grade **IDEAL**

May 21, 2025

IGI Report Number **LG710542915**

Description **LABORATORY GROWN DIAMOND**

Shape and Cutting Style **ROUND BRILLIANT**

Measurements **7.23 - 7.29 X 4.48 MM**

**GRADING RESULTS**

Carat Weight **1.45 CARAT**

Color Grade **D**

Clarity Grade **VS 1**

Cut Grade **IDEAL**

**ADDITIONAL GRADING INFORMATION**

Polish **VERY GOOD**

Symmetry **EXCELLENT**

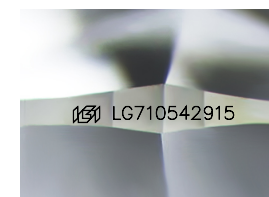
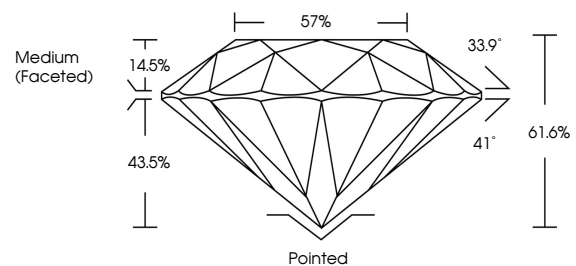
Fluorescence **NONE**

Inscription(s) **IGI LG710542915**

Comments: As Grown - No indication of post-growth treatment.

This Laboratory Grown Diamond was created by High Pressure High Temperature (HPHT) growth process. Type II

**PROPORTIONS**



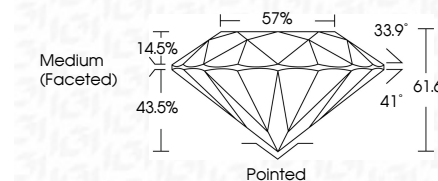
Sample Image Used

**COLOR**

D E F G H I J Faint Very Light Light

**CLARITY**

IF	VS <sup>1-2</sup>	VS <sup>1-2</sup>	SI <sup>1-2</sup>	I <sup>1-3</sup>
Internally Flawless	Very Very Slightly Included	Very Slightly Included	Slightly Included	Included



**ADDITIONAL GRADING INFORMATION**

Polish **VERY GOOD**

Symmetry **EXCELLENT**

Fluorescence **NONE**

Inscription(s) **IGI LG710542915**

Comments: As Grown - No indication of post-growth treatment.

This Laboratory Grown Diamond was created by High Pressure High Temperature (HPHT) growth process. Type II



**IGI**



May 21, 2025  
IGI Report No LG710542915  
ROUND BRILLIANT

7.23 - 7.29 X 4.48 MM

1.45 CARAT  
D

Color Grade  
VS 1  
IDEAL

Clarity Grade  
VS 1

Depth  
61.6%

Table  
14.5%

Girdle  
57%

Medium (Faceted)

Culet  
Pointed

Polish  
VERY GOOD

Symmetry  
EXCELLENT

Fluorescence  
NONE

Inscriptions(s)  
IGI LG710542915

Comments:  
As Grown - No indication of post-growth treatment.  
This Laboratory Grown Diamond was created by High Pressure High Temperature (HPHT) growth process. Type II