



ELECTRONIC COPY

LABORATORY GROWN DIAMOND REPORT

LG710542878
Report verification at igi.org

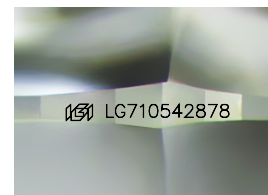
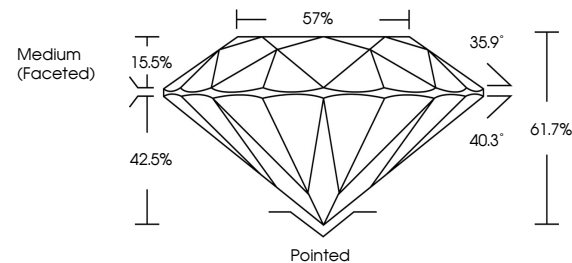
May 22, 2025	
IGI Report Number	LG710542878
Description	LABORATORY GROWN DIAMOND
Shape and Cutting Style	ROUND BRILLIANT
Measurements	6.79 - 6.84 X 4.21 MM
GRADING RESULTS	
Carat Weight	1.21 CARAT
Color Grade	D
Clarity Grade	VS 1
Cut Grade	IDEAL

ADDITIONAL GRADING INFORMATION

Polish	EXCELLENT
Symmetry	EXCELLENT
Fluorescence	NONE
Inscription(s)	 LG710542878

Comments: As Grown - No indication of post-growth treatment.
This Laboratory Grown Diamond was created by High Pressure High Temperature (HPHT) growth process.
Type II

PROPORTIONS



Sample Image Used

COLOR

D E F G H I J Faint Very Light Light

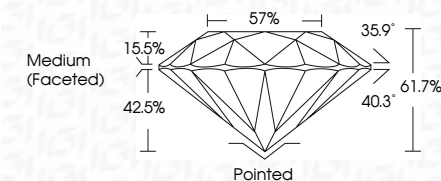
CLARITY

IF	VS ¹⁻²	VS ¹⁻²	SI ¹⁻²	I ¹⁻³
Internally Flawless	Very Very Slightly Included	Very Slightly Included	Slightly Included	Included

LABORATORY GROWN DIAMOND REPORT



May 22, 2025	
IGI Report Number	LG710542878
Description	LABORATORY GROWN DIAMOND
Shape and Cutting Style	ROUND BRILLIANT
Measurements	6.79 - 6.84 X 4.21 MM
GRADING RESULTS	
Carat Weight	1.21 CARAT
Color Grade	D
Clarity Grade	VS 1
Cut Grade	IDEAL



ADDITIONAL GRADING INFORMATION

Polish	EXCELLENT
Symmetry	EXCELLENT
Fluorescence	NONE
Inscription(s)	(G) LG710542878
<p>Comments: As Grown - No indication of post-growth treatment.</p> <p>This Laboratory Grown Diamond was created by High Pressure High Temperature (HPHT) growth process.</p> <p>Type II</p>	



© IGI 2020, International Gemological Institute

FD - 10 20



THIS DOCUMENT WAS PRODUCED WITH THE FOLLOWING SECURITY MEASURES: SPECIAL DOCUMENT PAPER, INK SCREENS, WATERMARK, BACKGROUND DESIGNS, HOLOGRAM AND OTHER SECURITY FEATURES NOT LISTED AND DO EXCEED DOCUMENT SECURITY INDUSTRY GUIDELINES

www.igi.org

May 22, 2025
GI Report No LG710542878
ROUND BRILLIANT

6.79 - 6.84 X 4.21 MM

5.79 - 6.84 X 4.21 MM
1.21 CARAT

Color Grade	1.21 Carat
D	

Clarity Grade	VS 1
---------------	------

Clarity Grade	Cut Grade	VS 1	IDEAL
VS 1	VS 1	VS 1	VS 1
VS 2	VS 2	VS 2	VS 2
VS 3	VS 3	VS 3	VS 3
VS 4	VS 4	VS 4	VS 4
VS 5	VS 5	VS 5	VS 5
VS 6	VS 6	VS 6	VS 6
VS 7	VS 7	VS 7	VS 7
VS 8	VS 8	VS 8	VS 8
VS 9	VS 9	VS 9	VS 9
VS 10	VS 10	VS 10	VS 10
VS 11	VS 11	VS 11	VS 11
VS 12	VS 12	VS 12	VS 12
VS 13	VS 13	VS 13	VS 13
VS 14	VS 14	VS 14	VS 14
VS 15	VS 15	VS 15	VS 15
VS 16	VS 16	VS 16	VS 16
VS 17	VS 17	VS 17	VS 17
VS 18	VS 18	VS 18	VS 18
VS 19	VS 19	VS 19	VS 19
VS 20	VS 20	VS 20	VS 20
VS 21	VS 21	VS 21	VS 21
VS 22	VS 22	VS 22	VS 22
VS 23	VS 23	VS 23	VS 23
VS 24	VS 24	VS 24	VS 24
VS 25	VS 25	VS 25	VS 25
VS 26	VS 26	VS 26	VS 26
VS 27	VS 27	VS 27	VS 27
VS 28	VS 28	VS 28	VS 28
VS 29	VS 29	VS 29	VS 29
VS 30	VS 30	VS 30	VS 30
VS 31	VS 31	VS 31	VS 31
VS 32	VS 32	VS 32	VS 32
VS 33	VS 33	VS 33	VS 33
VS 34	VS 34	VS 34	VS 34
VS 35	VS 35	VS 35	VS 35
VS 36	VS 36	VS 36	VS 36
VS 37	VS 37	VS 37	VS 37
VS 38	VS 38	VS 38	VS 38
VS 39	VS 39	VS 39	VS 39
VS 40	VS 40	VS 40	VS 40
VS 41	VS 41	VS 41	VS 41
VS 42	VS 42	VS 42	VS 42
VS 43	VS 43	VS 43	VS 43
VS 44	VS 44	VS 44	VS 44
VS 45	VS 45	VS 45	VS 45
VS 46	VS 46	VS 46	VS 46
VS 47	VS 47	VS 47	VS 47
VS 48	VS 48	VS 48	VS 48
VS 49	VS 49	VS 49	VS 49
VS 50	VS 50	VS 50	VS 50
VS 51	VS 51	VS 51	VS 51
VS 52	VS 52	VS 52	VS 52
VS 53	VS 53	VS 53	VS 53
VS 54	VS 54	VS 54	VS 54
VS 55	VS 55	VS 55	VS 55
VS 56	VS 56	VS 56	VS 56
VS 57	VS 57	VS 57	VS 57
VS 58	VS 58	VS 58	VS 58
VS 59	VS 59	VS 59	VS 59
VS 60	VS 60	VS 60	VS 60
VS 61	VS 61	VS 61	VS 61
VS 62	VS 62	VS 62	VS 62
VS 63	VS 63	VS 63	VS 63
VS 64	VS 64	VS 64	VS 64
VS 65	VS 65	VS 65	VS 65
VS 66	VS 66	VS 66	VS 66
VS 67	VS 67	VS 67	VS 67
VS 68	VS 68	VS 68	VS 68
VS 69	VS 69	VS 69	VS 69
VS 70	VS 70	VS 70	VS 70
VS 71	VS 71	VS 71	VS 71
VS 72	VS 72	VS 72	VS 72
VS 73	VS 73	VS 73	VS 73
VS 74	VS 74	VS 74	VS 74
VS 75	VS 75	VS 75	VS 75
VS 76	VS 76	VS 76	VS 76
VS 77	VS 77	VS 77	VS 77
VS 78	VS 78	VS 78	VS 78
VS 79	VS 79	VS 79	VS 79
VS 80	VS 80	VS 80	VS 80
VS 81	VS 81	VS 81	VS 81
VS 82	VS 82	VS 82	VS 82
VS 83	VS 83	VS 83	VS 83
VS 84	VS 84	VS 84	VS 84
VS 85	VS 85	VS 85	VS 85
VS 86	VS 86	VS 86	VS 86
VS 87	VS 87	VS 87	

Depth	61.7%
1000	61.7%
2000	61.7%
3000	61.7%
4000	61.7%
5000	61.7%
6000	61.7%
7000	61.7%
8000	61.7%
9000	61.7%
10000	61.7%
11000	61.7%
12000	61.7%
13000	61.7%
14000	61.7%
15000	61.7%
16000	61.7%
17000	61.7%
18000	61.7%
19000	61.7%
20000	61.7%
21000	61.7%
22000	61.7%
23000	61.7%
24000	61.7%
25000	61.7%
26000	61.7%
27000	61.7%
28000	61.7%
29000	61.7%
30000	61.7%
31000	61.7%
32000	61.7%
33000	61.7%
34000	61.7%
35000	61.7%
36000	61.7%
37000	61.7%
38000	61.7%
39000	61.7%
40000	61.7%
41000	61.7%
42000	61.7%
43000	61.7%
44000	61.7%
45000	61.7%
46000	61.7%
47000	61.7%
48000	61.7%
49000	61.7%
50000	61.7%
51000	61.7%
52000	61.7%
53000	61.7%
54000	61.7%
55000	61.7%
56000	61.7%
57000	61.7%
58000	61.7%
59000	61.7%
60000	61.7%
61000	61.7%
62000	61.7%
63000	61.7%
64000	61.7%
65000	61.7%
66000	61.7%
67000	61.7%
68000	61.7%
69000	61.7%
70000	61.7%
71000	61.7%
72000	61.7%
73000	61.7%
74000	61.7%
75000	61.7%
76000	61.7%
77000	61.7%
78000	61.7%
79000	61.7%
80000	61.7%
81000	61.7%
82000	61.7%
83000	61.7%
84000	61.7%
85000	61.7%
86000	61.7%
87000	61.7%
88000	61.7%
89000	61.7%
90000	61.7%
91000	61.7%
92000	61.7%
93000	61.7%
94000	61.7%
95000	61.7%
96000	61.7%
97000	61.7%
98000	61.7%
99000	61.7%
100000	61.7%

Table	57%
Girdle	
Mod. in 500000	

Girdle

	Culet	Pointed
1		
2		
3		
4		
5		
6		
7		
8		
9		
10		
11		
12		
13		
14		
15		
16		
17		
18		
19		
20		
21		
22		
23		
24		
25		
26		
27		
28		
29		
30		
31		
32		
33		
34		
35		
36		
37		
38		
39		
40		
41		
42		
43		
44		
45		
46		
47		
48		
49		
50		
51		
52		
53		
54		
55		
56		
57		
58		
59		
60		
61		
62		
63		
64		
65		
66		
67		
68		
69		
70		
71		
72		
73		
74		
75		
76		
77		
78		
79		
80		
81		
82		
83		
84		
85		
86		
87		
88		
89		
90		
91		
92		
93		
94		
95		
96		
97		
98		
99		
100		

Polish	EXCELLENT
Polished	EXCELLENT

Symmetry

Fluorescence	None
Insulin(s)	G710542878

Inscription(\$)
191 LG/106428/8

Comments:
As Grown - No Indication of post-arrowth

As Grown - No indication of post-growth treatment.

**This Laboratory Grown Diamond was
Created by High Pressure High**

Temperature (HPHT) growth process,
Type II