



**ELECTRONIC COPY**

LG710542834  
Report verification at [igi.org](https://igi.org)

Report verification at [igi.org](http://igi.org)

LABORATORY GROWN DIAMOND REPORT



May 22, 2025

IGI Report Number **LG710542834**Description **LABORATORY GROWN DIAMOND**Shape and Cutting Style **ROUND BRILLIANT**

Measurements 6.85 - 6.90 X 4.15 MM

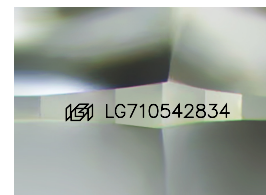
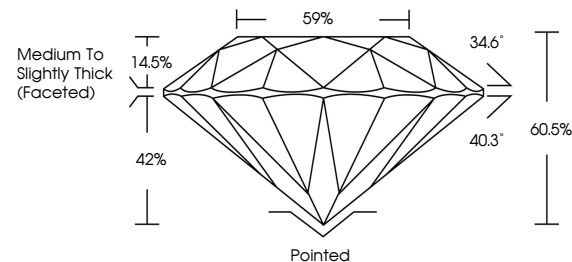
## GRADING RESULTS

Carat Weight 1.22 CARAT

Color Grade D

Clarity Grade VS 1

Cut Grade **IDEAL**



Sample Image Used

## COLOR

D E F G H I J Faint Very Light Light

## CLARITY

IF WS<sup>1-2</sup> VS<sup>1-2</sup> SI<sup>1-2</sup> |<sup>1-3</sup>

Internally Flawless	Very Very Slightly Included	Very Slightly Included	Slightly Included	Included
------------------------	--------------------------------	---------------------------	----------------------	----------

### ADDITIONAL GRADING INFORMATION

Polish EXCELLENT

Symmetry **EXCELLENT**Fluorescence **NONE**Inscription(s)  LG710542834

Comments: As Grown - No indication of post-growth treatment.

This Laboratory Grown Diamond was created by High Pressure High Temperature (HPHT) growth process.

Type II



© IGI 2020, International Gemological Institute

FD - 10 20



THIS DOCUMENT WAS PRODUCED WITH THE FOLLOWING SECURITY MEASURES: SPECIAL DOCUMENT PAPER, INK SCREENS, WATERMARK, BACKGROUND DESIGNS, HOLOGRAM AND OTHER SECURITY FEATURES NOT LISTED AND DO EXCEED DOCUMENT SECURITY INDUSTRY GUIDELINE

**www.igi.org**

May 29, 2025	1.22 CARAT	VS 1	Polished	Comments: Grown - No indication of post-growth treatment. This Laboratory Grown Diamond was created by High Pressure High temperature (HPHT) growth process. Type II
GI Report No. LG71062834	D	IDEAL	EXCELLENT	
ROUND BRILLIANT		60.6%	EXCELLENT	
8.95 - 8.90 X 4.15 MM		59%	NONE	
		Medium to Slightly Thick (Focalized)	lg71062834	
	Carat Weight	Clarity Grade	Culet	
	Color Grade	Depth	Polish	
		Table	Symmetry	
		Girdle	Fluorescence	
			Inscriptions(s)	