



ELECTRONIC COPY

LABORATORY GROWN DIAMOND REPORT

LG710542788
Report verification at igi.org

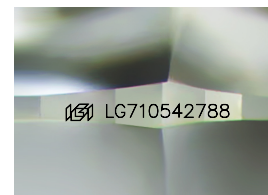
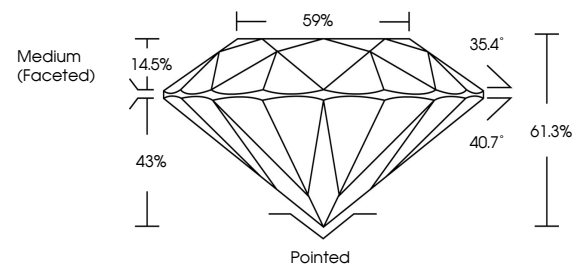
May 21, 2025	
IGI Report Number	LG710542788
Description	LABORATORY GROWN DIAMOND
Shape and Cutting Style	ROUND BRILLIANT
Measurements	6.82 - 6.87 X 4.20 MM
GRADING RESULTS	
Carat Weight	1.22 CARAT
Color Grade	D
Clarity Grade	VS 1
Cut Grade	IDEAL

ADDITIONAL GRADING INFORMATION

Polish	EXCELLENT
Symmetry	EXCELLENT
Fluorescence	NONE
Inscription(s)	151 LG710542788

Comments: As Grown - No indication of post-growth treatment.
This Laboratory Grown Diamond was created by High Pressure High Temperature (HPHT) growth process.
Type II

PROPORTIONS



Sample Image Used

COLOR

D E F G H I J Faint Very Light Light

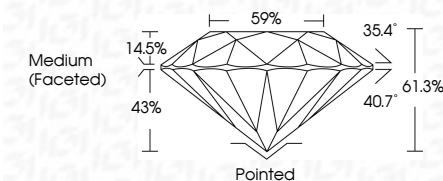
CLARITY

IF	VS ¹⁻²	VS ¹⁻²	SI ¹⁻²	I ¹⁻³
Internally Flawless	Very Very Slightly Included	Very Slightly Included	Slightly Included	Included


LABORATORY GROWN DIAMOND REPORT



May 21, 2025	
IGI Report Number	LG710542788
Description	LABORATORY GROWN DIAMOND
Shape and Cutting Style	ROUND BRILLIANT
Measurements	6.82 - 6.87 X 4.20 MM
GRADING RESULTS	
Carat Weight	1.22 CARAT
Color Grade	D
Clarity Grade	VS 1
Cut Grade	IDEAL



ADDITIONAL GRADING INFORMATION

Polish	EXCELLENT
Symmetry	EXCELLENT
Fluorescence	NONE
Inscription(s)	 LG710542788
Comments: As Grown - No indication of post-growth treatment.	
This Laboratory Grown Diamond was created by High Pressure High Temperature (HPHT) growth process.	
Type II	



© IGI 2020, International Gemological Institute

FD - 10 20

www.igi.org



THIS DOCUMENT WAS PRODUCED WITH THE FOLLOWING SECURITY MEASURES: SPECIAL DOCUMENT PAPER, INK SCREENS, WATERMARK, BACKGROUND DESIGNS, HOLOGRAM AND OTHER SECURITY FEATURES NOT LISTED AND DO EXCEED DOCUMENT SECURITY INDUSTRY GUIDELINE

May 21, 2025
GI Report No LG710542788
ROUND BRILLIANT

5.82 - 6.87 X 4.20 MM

5.82 - 6.8 / X 4.20 MM
Carat Weight 1.22 CARAT

Color Grade

Clarity Grade	VS 1
VS 1	

Cut Grade	IDEAL
Depth	61.3%

Dep III	01.3%
Table	59%

Girdle

Culet	Pointed
-------	---------

Culter	Pointed
Polish	EXCELLENT

Symmetry	EXCELLENT
Fluorescence	NONE

Fluorescence	NONE
Inscription(s)	191 LG710542788

Comments:

Comments:
As Grown - No Indication of post-growth

treatment. This Laboratory Grown Diamond was created by: Lilich Process, LLC.

created by High Pressure High Temperature (HPHT) growth process.

type II