



**ELECTRONIC COPY**

## LABORATORY GROWN DIAMOND REPORT

LG710542740  
Report verification at [igi.org](https://igi.org)

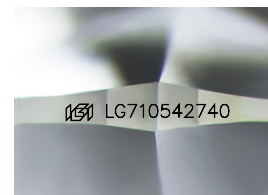
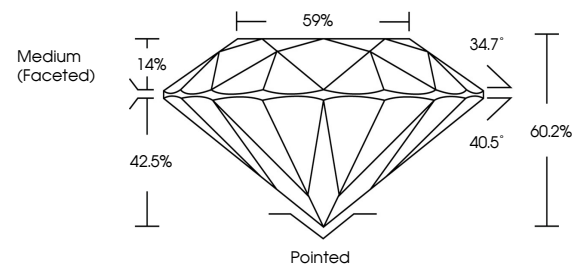
May 22, 2025	
IGI Report Number	LG710542740
Description	LABORATORY GROWN DIAMOND
Shape and Cutting Style	ROUND BRILLIANT
Measurements	6.91 - 6.94 X 4.17 MM
<b>GRADING RESULTS</b>	
Carat Weight	1.23 CARAT
Color Grade	D
Clarity Grade	VS 1
Cut Grade	IDEAL

### ADDITIONAL GRADING INFORMATION

Polish	EXCELLENT
Symmetry	EXCELLENT
Fluorescence	NONE
Inscription(s)	151 LG710542740

Comments: As Grown - No indication of post-growth treatment.  
This Laboratory Grown Diamond was created by High Pressure High Temperature (HPHT) growth process.  
Type II

## PROPORTIONS



Sample Image Used

## COLOR

D E F G H I J Faint Very Light Light

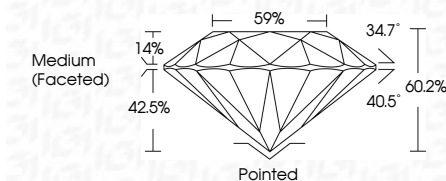
## CLARITY

IF	VS <sup>1-2</sup>	VS <sup>1-2</sup>	SI <sup>1-2</sup>	I <sup>1-3</sup>
Internally Flawless	Very Very Slightly Included	Very Slightly Included	Slightly Included	Included

## LABORATORY GROWN DIAMOND REPORT



May 22, 2025	
IGI Report Number	LG710542740
Description	LABORATORY GROWN DIAMOND
Shape and Cutting Style	ROUND BRILLIANT
Measurements	6.91 - 6.94 X 4.17 MM
GRADING RESULTS	
Carat Weight	1.23 CARAT
Color Grade	D
Clarity Grade	VS 1
Cut Grade	IDEAL



### ADDITIONAL GRADING INFORMATION

Polish	EXCELLENT
Symmetry	EXCELLENT
Fluorescence	NONE
Inscription(s)	<del>LG</del> LG710542740
<p>Comments: As Grown - No indication of post-growth treatment.</p> <p>This Laboratory Grown Diamond was created by High Pressure High Temperature (HPHT) growth process.</p> <p>Type II</p>	



© IGI 2020, International Gemological Institute

FD - 10 20

**www.igi.org**



THIS DOCUMENT WAS PRODUCED WITH THE FOLLOWING SECURITY MEASURES: SPECIAL DOCUMENT PAPER, INK SCREENS, WATERMARK, BACKGROUND DESIGNS, HOLOGRAM AND OTHER SECURITY FEATURES NOT LISTED AND DO EXCEED DOCUMENT SECURITY INDUSTRY GUIDELINE

May 29, 2005	1.25 CARAT	VSI	Polished	Comments: As Grown - No indication of post-growth treatment. High Pressure Grown Diamond was created by High Pressure High Temperature (HPHT) growth process. Type II
(G) Report No. LG71062740	D	IDEAL	EXCELLENT	
ROUND BRILLIANT	Color Grade	60.2%	EXCELLENT	
6.97 - 5.94 X 4.17 MM	Clarity Grade	59%	NONE	
	Cut Grade	Medium (Faceted)	1691 LG71062740	
	Carat Weight			
	Table			
	Depth			
	Girdle			
	Culet Grade			
	Symmetry			
	Fluorescence			
	Inscriptions(s)			