



**ELECTRONIC COPY**

## LABORATORY GROWN DIAMOND REPORT

LG710542310  
Report verification at [igi.org](https://igi.org)

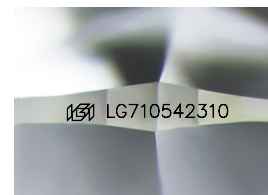
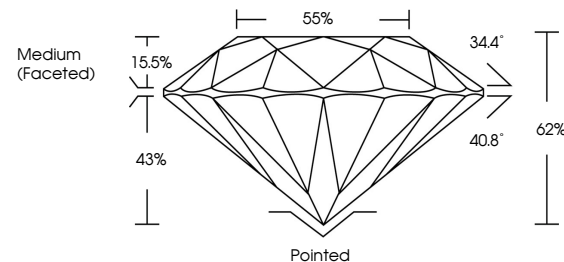
May 22, 2025	
IGI Report Number	LG710542310
Description	LABORATORY GROWN DIAMOND
Shape and Cutting Style	ROUND BRILLIANT
Measurements	6.86 - 6.91 X 4.27 MM
GRADING RESULTS	
Carat Weight	1.23 CARAT
Color Grade	D
Clarity Grade	VS 1
Cut Grade	IDEAL

### ADDITIONAL GRADING INFORMATION

Polish	EXCELLENT
Symmetry	EXCELLENT
Fluorescence	NONE
Inscription(s)	15 LG710542310

Comments: As Grown - No indication of post-growth treatment.  
This Laboratory Grown Diamond was created by High Pressure High Temperature (HPHT) growth process.  
Type II

## PROPORTIONS



Sample Image Used

COLOR

D E F G H I J Faint Very Light Light

## CLARITY

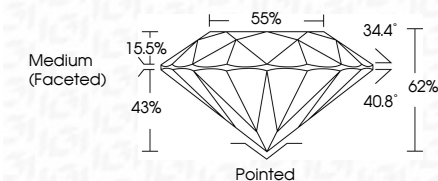
IF      WS<sup>1-2</sup>      VS<sup>1-2</sup>      SI<sup>1-2</sup>      I<sup>1-3</sup>

Internally Flawless	Very Very Slightly Included	Very Slightly Included	Slightly Included	Included
------------------------	--------------------------------	---------------------------	----------------------	----------


## LABORATORY GROWN DIAMOND REPORT



May 22, 2025	
IGI Report Number	LG710542310
Description	LABORATORY GROWN DIAMOND
Shape and Cutting Style	ROUND BRILLIANT
Measurements	6.86 - 6.91 X 4.27 MM
GRADING RESULTS	
Carat Weight	1.23 CARAT
Color Grade	D
Clarity Grade	VS 1
Cut Grade	IDEAL



### ADDITIONAL GRADING INFORMATION

Polish	EXCELLENT
Symmetry	EXCELLENT
Fluorescence	NONE
Inscription(s)	 LG710542310
<p>Comments: As Grown - No indication of post-growth treatment.</p> <p>This Laboratory Grown Diamond was created by High Pressure High Temperature (HPHT) growth process.</p> <p>Type II</p>	



© IGI 2020, International Gemological Institute

FD - 10 20



THIS DOCUMENT WAS PRODUCED WITH THE FOLLOWING SECURITY MEASURES: SPECIAL DOCUMENT PAPER, INK SCREENS, WATERMARK, BACKGROUND DESIGNS, HOLOGRAM AND OTHER SECURITY FEATURES NOT LISTED AND DO EXCEED DOCUMENT SECURITY INDUSTRY GUIDELINES

**www.igi.org**

May 29, 2005	Carat Weight	1.25 CARAT
GI Report No. L6710562310	Color Grade	D
ROUND BRILLIANT	Clarity Grade	VS 1
5.86 - 5.91 X 4.27 MM	Cut Grade	IDEAL
	Depth	62%
	Table	55%
	Grade	Medium (Frosted)
	Culet	Pointed
	Polish	EXCELLENT
	Symmetry	EXCELLENT
	Fluorescence	NONE
	Inscriptions(s)	689 L6710562310
	Comments:	As Grown - No Indication of post-growth treatment.
		This Laboratory Grown Diamond was created by High Pressure High Temperature (HPHT) growth process.
		Type II