



ELECTRONIC COPY

LG710541253
Report verification at igi.org



May 29, 2025
IGI Report Number **LG710541253**
Description **LABORATORY GROWN DIAMOND**
Shape and Cutting Style **PRINCESS CUT**
Measurements **8.72 X 8.53 X 6.11 MM**
GRADING RESULTS
Carat Weight **4.07 CARATS**
Color Grade **D**
Clarity Grade **VVS 1**

LABORATORY GROWN DIAMOND REPORT

May 29, 2025
IGI Report Number **LG710541253**
Description **LABORATORY GROWN DIAMOND**
Shape and Cutting Style **PRINCESS CUT**
Measurements **8.72 X 8.53 X 6.11 MM**

GRADING RESULTS

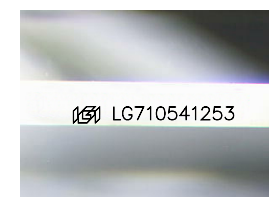
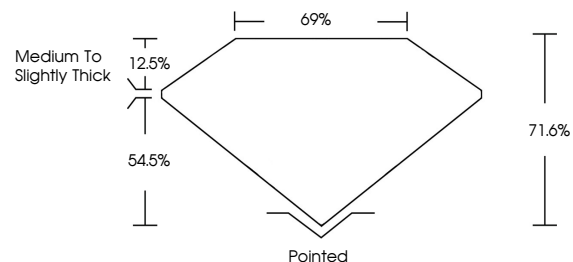
Carat Weight **4.07 CARATS**
Color Grade **D**
Clarity Grade **VVS 1**

ADDITIONAL GRADING INFORMATION

Polish **EXCELLENT**
Symmetry **EXCELLENT**
Fluorescence **NONE**
Inscription(s) **IGI LG710541253**

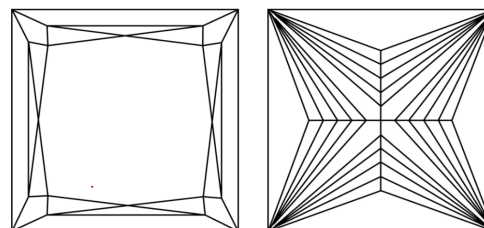
Comments: This Laboratory Grown Diamond was created by Chemical Vapor Deposition (CVD) growth process. Type IIa

PROPORTIONS



Sample Image Used

CLARITY CHARACTERISTICS



KEY TO SYMBOLS

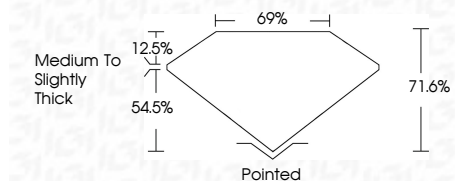
Red symbols indicate internal characteristics.
Green symbols indicate external characteristics.

COLOR

D E F G H I J Faint Very Light Light

CLARITY

IF	VS ¹⁻²	VVS ¹⁻²	S ¹⁻²	I ¹⁻³
Internally Flawless	Very Very Slightly Included	Very Slightly Included	Slightly Included	Included



ADDITIONAL GRADING INFORMATION

Polish **EXCELLENT**
Symmetry **EXCELLENT**
Fluorescence **NONE**
Inscription(s) **IGI LG710541253**
Comments: This Laboratory Grown Diamond was created by Chemical Vapor Deposition (CVD) growth process. Type IIa



May 29, 2025
IGI Report No LG710541253
PRINCESS CUT
8.72 X 8.53 X 6.11 MM
Carat Weight **4.07 CARATS**
Color Grade **D**
Clarity Grade **VVS 1**
Depth **71.6%**
Table **69%**
Girdle **Medium to Slightly Thick**
Culet **Pointed**
Polish **EXCELLENT**
Symmetry **EXCELLENT**
Fluorescence **NONE**
Inscription(s) **IGI LG710541253**
Comments: This Laboratory Grown Diamond was created by Chemical Vapor Deposition (CVD) growth process. Type IIa