



**ELECTRONIC COPY**

## LABORATORY GROWN DIAMOND REPORT

May 22, 2025	
IGI Report Number	LG710539955
Description	LABORATORY GROWN DIAMOND
Shape and Cutting Style	ROUND BRILLIANT
Measurements	6.58 - 6.62 X 4.01 MM

## GRADING RESULTS

Carat Weight	1.06 CARAT
Color Grade	D
Clarity Grade	VS 1
Cut Grade	IDEAL

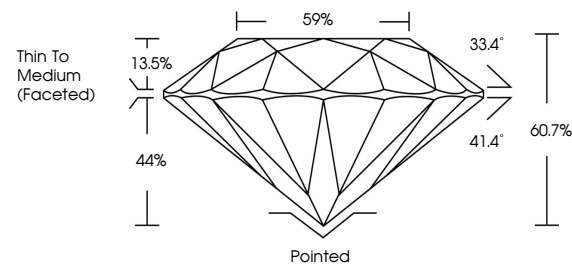
### ADDITIONAL GRADING INFORMATION

Polish	EXCELLENT
Symmetry	EXCELLENT
Fluorescence	NONE
Inscription(s)	 LG710539955

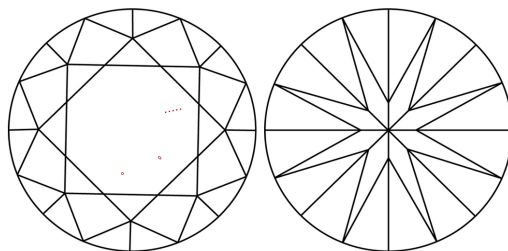
Comments: This Laboratory Grown Diamond was created by Chemical Vapor Deposition (CVD) growth process.  
Type IIa

LG710539955  
Report verification at [igi.org](https://igi.org)

## PROPORTIONS

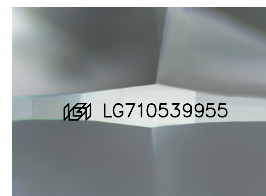


## CLARITY CHARACTERISTICS



## KEY TO SYMBOLS

Red symbols indicate internal characteristics.  
Green symbols indicate external characteristics.



Sample Image Used

## COLOR

D E F G H I J Faint Very Light Light

## CLARITY

IF VS<sup>1-2</sup> VS<sup>1-2</sup> SI<sup>1-2</sup> |<sup>1-3</sup>

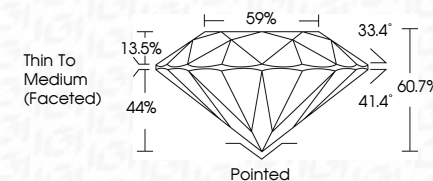
Internally Flawless	Very Very Slightly Included	Very Slightly Included	Slightly Included	Included
------------------------	--------------------------------	---------------------------	----------------------	----------



May 22, 2025	
IGI Report Number	LG710539955
Description	LABORATORY GROWN DIAMOND
Shape and Cutting Style	ROUND BRILLIANT
Measurements	6.58 - 6.62 X 4.01 MM

## GRADING RESULTS

Carat Weight	1.06 CARAT
Color Grade	D
Clarity Grade	VS 1
Cut Grade	IDEAL



### ADDITIONAL GRADING INFORMATION

Polish	EXCELLENT
Symmetry	EXCELLENT
Fluorescence	NONE
Inscription(s)	 LG710539955

Comments: This Laboratory Grown Diamond was created by Chemical Vapor Deposition (CVD) growth process.  
Type IIa



© IGI 2020, International Gemological Institute

FD - 10 20



THIS DOCUMENT WAS PRODUCED WITH THE FOLLOWING SECURITY MEASURES: SPECIAL DOCUMENT PAPER, INK SCREENS, WATERMARK, BACKGROUND DESIGNS, HOLOGRAM, AND OTHER SECURITY FEATURES NOT LISTED AND DO EXCEED DOCUMENT SECURITY INDUSTRY GUIDELINES.

**www.igi.org**

May 29, 2025	1.06 CARBAT	Carat Weight	VS 1	Thin To Medium (faceted)	Pointed	NONE	169 LG710539955	Comments: Grown Vapor used treated by Chemical Vapor Deposition (CVD) growth process. Type IIa
GI Report No. LG710539955	D	VS 1	IDEAL		EXCELLENT			
ROUND BRILLIANT	Color Grade	60.7%	59%		EXCELLENT			
	Clarity Grade							
	Car Grade							
	Depth							
	Table							
	Girdle							
	Culet							
	Polish							
	Symmetry							
	Fluorescence							
	Inscriptions(s)							