



**INTERNATIONAL
GEMOLOGICAL
INSTITUTE**

ELECTRONIC COPY

LG710539812
Report verification at igi.org

LABORATORY GROWN DIAMOND REPORT



May 22, 2025

IGI Report Number **LG710539812**

Description	LABORATORY GROWN DIAMOND
-------------	--------------------------

Shape and Cutting Style **PEAR BRILLIANT**

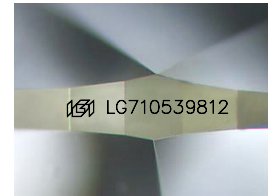
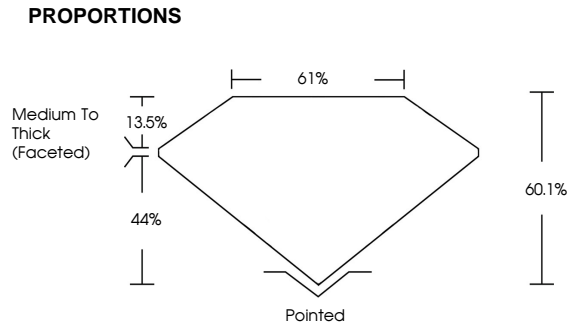
Measurements 11.24 X 6.99 X 4.20 MM

GRADING RESULTS

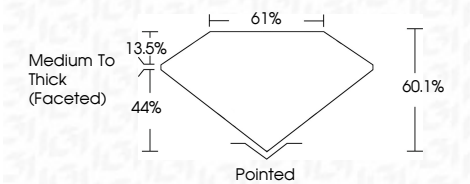
Carat Weight **1.97 CARAT**

Color Grade **D**

Clarity Grade VS 1



Sample Image Used



COLOR

D E F G H I J Faint Very Light Light

CLARITY

IF WS¹⁻² VS¹⁻² SI¹⁻² I¹⁻³

Internally Flawless	Very Very Slightly Included	Very Slightly Included	Slightly Included	Included
---------------------	-----------------------------	------------------------	-------------------	----------

ADDITIONAL GRADING INFORMATION

Polish **EXCELLENT**Symmetry **EXCELLENT**Fluorescence **NONE**Inscription(s) LG710539812

Comments: This Laboratory Grown Diamond was created by Chemical Vapor Deposition (CVD) growth process.
Type IIa



IGI



© IGI 2020, International Gemological Institute

FD - 10 20

www.igi.org

THIS DOCUMENT WAS PRODUCED WITH THE FOLLOWING SECURITY MEASURES: SPECIAL DOCUMENT PAPER, INK SCREENS, WATERMARK

May 22, 2025
IGI Report No LG710539812
PEAR BRILLIANT

11.24 X 6.99 X 4.20 MM	1.97 CARAT	D	VS 1	60.1%	61%	Medium To Thick (faceted)	Pointed	EXCELLENT	EXCELLENT	NONE	49916710639612
Carat Weight	Color Grade	Clarity Grade	Depth	Table	Girdle	Culet	Polish	Symmetry	Fluorescence	Inscription(s)	

Comments:
This Laboratory Grown Diamond was created by Chemical Vapor Deposition (CVD) growth process.
Type IIa