



ELECTRONIC COPY

LG710523555
Report verification at igi.org



May 24, 2025
IGI Report Number **LG710523555**
Description **LABORATORY GROWN DIAMOND**
Shape and Cutting Style **CUT CORNERED
RECTANGULAR MODIFIED
BRILLIANT**
Measurements **9.02 X 6.60 X 4.57 MM**
GRADING RESULTS
Carat Weight **2.36 CARATS**
Color Grade **H**
Clarity Grade **INTERNALLY FLAWLESS**
Cut Grade **EXCELLENT**

LABORATORY GROWN DIAMOND REPORT

May 24, 2025
IGI Report Number **LG710523555**
Description **LABORATORY GROWN DIAMOND**
Shape and Cutting Style **CUT CORNERED RECTANGULAR
MODIFIED BRILLIANT**
Measurements **9.02 X 6.60 X 4.57 MM**

GRADING RESULTS

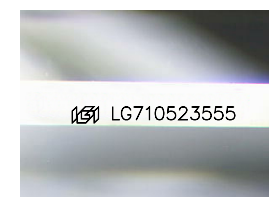
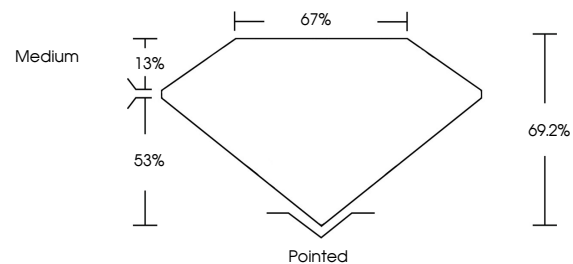
Carat Weight **2.36 CARATS**
Color Grade **H**
Clarity Grade **INTERNALLY FLAWLESS**
Cut Grade **EXCELLENT**

ADDITIONAL GRADING INFORMATION

Polish **EXCELLENT**
Symmetry **EXCELLENT**
Fluorescence **NONE**
Inscription(s) **IGI LG710523555**

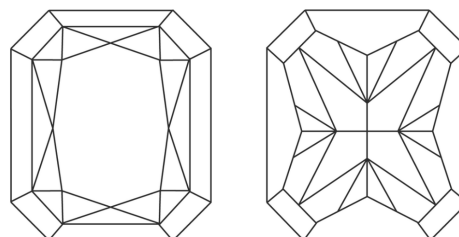
Comments: As Grown - No indication of post-growth treatment.
This Laboratory Grown Diamond was created by High Pressure High Temperature (HPHT) growth process.
Type II
Faint Blue

PROPORTIONS



Sample Image Used

CLARITY CHARACTERISTICS



KEY TO SYMBOLS

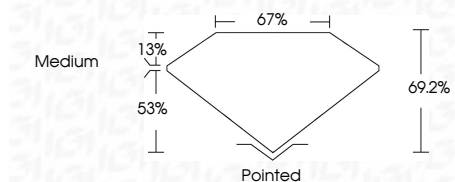
Red symbols indicate internal characteristics.
Green symbols indicate external characteristics.

COLOR

D E F G H I J Faint Very Light Light

CLARITY

| IF | VS ¹⁻² | VS ¹⁻² | SI ¹⁻² | I ¹⁻³ |
|---------------------|-----------------------------|------------------------|-------------------|------------------|
| Internally Flawless | Very Very Slightly Included | Very Slightly Included | Slightly Included | Included |



ADDITIONAL GRADING INFORMATION

Polish **EXCELLENT**
Symmetry **EXCELLENT**
Fluorescence **NONE**
Inscription(s) **IGI LG710523555**
Comments: As Grown - No indication of post-growth treatment.
This Laboratory Grown Diamond was created by High Pressure High Temperature (HPHT) growth process.
Type II
Faint Blue



| | | | | | | | | | | | | | | |
|--------------|---------------------------|---------------------------------------|-----------------------|-------------|---------------|-----------|-------|--------|--------|---------|-----------|--------------|----------------|--|
| May 24, 2025 | IGI Report No LG710523555 | CUT CORNERED RECT. MODIFIED BRILLIANT | 9.02 X 6.60 X 4.57 MM | 2.36 CARATS | H | EXCELLENT | 69.2% | 67% | Medium | Pointed | EXCELLENT | EXCELLENT | NONE | IGI LG710523555 |
| | | | | Color Grade | Clarity Grade | Depth | Table | Girdle | Culet | Polish | Symmetry | Fluorescence | Inscription(s) | Comments: As Grown - No indication of post-growth treatment. This Laboratory Grown Diamond was created by High Pressure High Temperature (HPHT) growth process. Type II Faint Blue |