



ELECTRONIC COPY

LG710513918 Report verification at igi.org



May 22, 2025 IGI Report Number LG710513918 Description LABORATORY GROWN DIAMOND Shape and Cutting Style CUSHION MODIFIED BRILLIANT Measurements 12.34 X 8.93 X 5.93 MM GRADING RESULTS Carat Weight 5.09 CARATS Color Grade F Clarity Grade VS 1

LABORATORY GROWN DIAMOND REPORT

May 22, 2025 IGI Report Number LG710513918 Description LABORATORY GROWN DIAMOND Shape and Cutting Style CUSHION MODIFIED BRILLIANT Measurements 12.34 X 8.93 X 5.93 MM

GRADING RESULTS

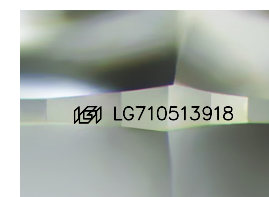
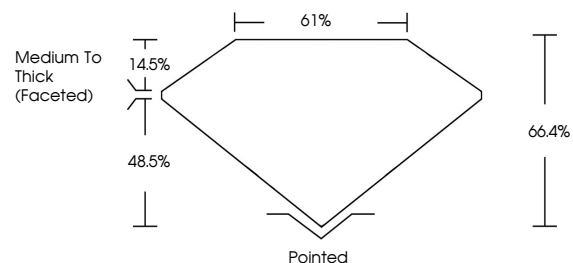
Carat Weight 5.09 CARATS Color Grade F Clarity Grade VS 1

ADDITIONAL GRADING INFORMATION

Polish EXCELLENT Symmetry EXCELLENT Fluorescence NONE Inscription(s) IGI LG710513918

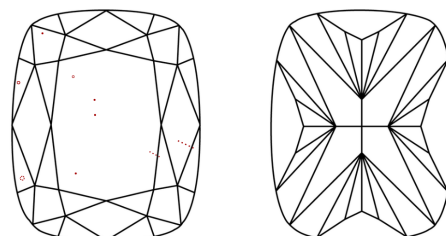
Comments: This Laboratory Grown Diamond was created by Chemical Vapor Deposition (CVD) growth process. Type IIa

PROPORTIONS



Sample Image Used

CLARITY CHARACTERISTICS



KEY TO SYMBOLS

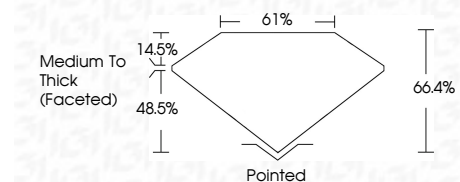
Red symbols indicate internal characteristics. Green symbols indicate external characteristics.

COLOR

D E F G H I J Faint Very Light Light

CLARITY

IF WS 1-2 VS 1-2 SI 1-2 I 1-3 Internally Flawless Very Very Slightly Included Very Slightly Included Slightly Included Included



ADDITIONAL GRADING INFORMATION

Polish EXCELLENT Symmetry EXCELLENT Fluorescence NONE Inscription(s) IGI LG710513918 Comments: This Laboratory Grown Diamond was created by Chemical Vapor Deposition (CVD) growth process. Type IIa



May 22, 2025 IGI Report No LG710513918 CUSHION MODIFIED BRILLIANT 12.34 X 8.93 X 5.93 MM 5.09 CARATS F VS 1 66.4% 61% Medium To Thick (Faceted) Pointed EXCELLENT EXCELLENT NONE IGI LG710513918 Comments: This Laboratory Grown Diamond was created by Chemical Vapor Deposition (CVD) growth process. Type IIa