



ELECTRONIC COPY

LG710510628
Report verification at igi.org



May 24, 2025

IGI Report Number **LG710510628**

Description **LABORATORY GROWN DIAMOND**

Shape and Cutting Style **ROUND BRILLIANT**

Measurements **8.21 - 8.26 X 4.99 MM**

GRADING RESULTS

Carat Weight **2.06 CARATS**

Color Grade **E**

Clarity Grade **VVS 2**

Cut Grade **IDEAL**

May 24, 2025

IGI Report Number **LG710510628**

Description **LABORATORY GROWN DIAMOND**

Shape and Cutting Style **ROUND BRILLIANT**

Measurements **8.21 - 8.26 X 4.99 MM**

GRADING RESULTS

Carat Weight **2.06 CARATS**

Color Grade **E**

Clarity Grade **VVS 2**

Cut Grade **IDEAL**

ADDITIONAL GRADING INFORMATION

Polish **EXCELLENT**

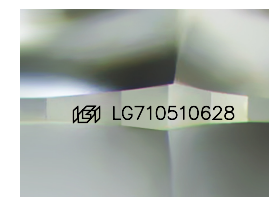
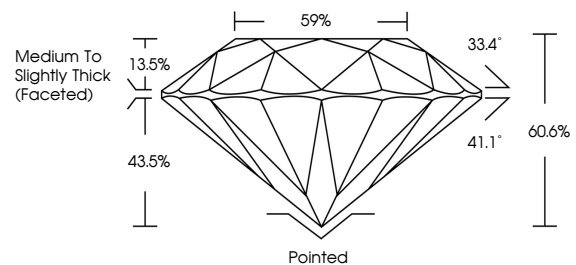
Symmetry **EXCELLENT**

Fluorescence **NONE**

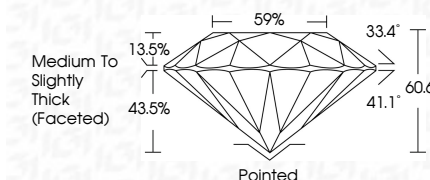
Inscription(s) **LG710510628**

Comments: This Laboratory Grown Diamond was created by Chemical Vapor Deposition (CVD) growth process. Type IIa

PROPORTIONS



Sample Image Used



COLOR

D E F G H I J Faint Very Light Light

CLARITY

IF	VS ¹⁻²	VS ¹⁻²	SI ¹⁻²	I ¹⁻³
Internally Flawless	Very Very Slightly Included	Very Slightly Included	Slightly Included	Included

ADDITIONAL GRADING INFORMATION

Polish **EXCELLENT**

Symmetry **EXCELLENT**

Fluorescence **NONE**

Inscription(s) **LG710510628**

Comments: This Laboratory Grown Diamond was created by Chemical Vapor Deposition (CVD) growth process. Type IIa



IGI



May 24, 2025	IGI Report No LG710510628	2.06 CARATS	E	Pointed	EXCELLENT	EXCELLENT	NONE	LG710510628
8.21 - 8.26 X 4.99 MM	ROUND BRILLIANT	Carat Weight	VVS 2	Polish	IDEAL	EXCELLENT	NONE	Comments: This Laboratory Grown Diamond was created by Chemical Vapor Deposition (CVD) growth process. Type IIa
		Color Grade	IDEAL	Symmetry	60.6%	EXCELLENT	NONE	
		Clarity Grade	69%	Fluorescence	Medium To Slightly Thick (Faceted)	EXCELLENT	NONE	
		Cut Grade	Pointed	Inscription(s)		EXCELLENT	NONE	
		Table				EXCELLENT	NONE	
		Girdle				EXCELLENT	NONE	