

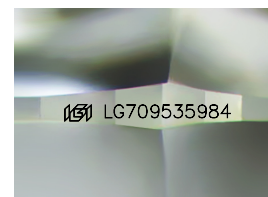
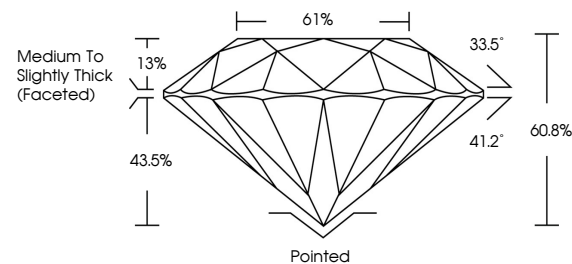


ELECTRONIC COPY

LABORATORY GROWN DIAMOND REPORT

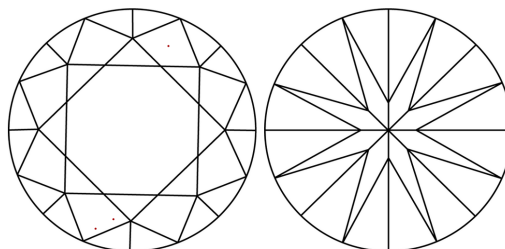
LG709535984
Report verification at igi.org

PROPORTIONS



Sample Image Used

CLARITY CHARACTERISTICS



KEY TO SYMBOLS

Red symbols indicate internal characteristics.
Green symbols indicate external characteristics.

COLOR

D E F G H I J Faint Very Light Light

CLARITY

IF WS¹⁻² VS¹⁻² SI¹⁻² |¹⁻³

Internally Flawless	Very Very Slightly Included	Very Slightly Included	Slightly Included	Included
------------------------	--------------------------------	---------------------------	----------------------	----------



May 19, 2025

IGI Report Number **LG709535984**

Description	LABORATORY GROWN DIAMOND
-------------	--------------------------

Shape and Cutting Style **ROUND BRILLIANT**

Measurements 7.10 - 7.13 X 4.33 MM

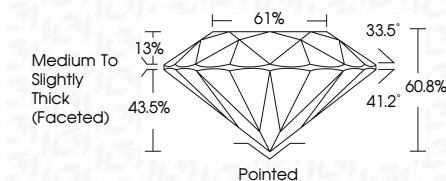
GRADING RESULTS

Carat Weight **1.37 CARAT**

Color Grade	D
-------------	---

Clarity Grade **VVS 2**

Cut Grade **EXCELLENT**



ADDITIONAL GRADING INFORMATION

Polish **EXCELLENT**Symmetry **EXCELLENT**

Fluorescence NONI

Inscription(s) LG709535984

Comments: This Laboratory Grown Diamond was created by Chemical Vapor Deposition (CVD) growth process.
Type IIa



© IGI 2020, International Gemological Institute

FD - 10 20



THIS DOCUMENT WAS PRODUCED WITH THE FOLLOWING SECURITY MEASURES: SPECIAL DOCUMENT PAPER, INK SCREENS, WATERMARK, BACKGROUND DESIGNS, HOLOGRAM AND OTHER SECURITY FEATURES NOT LISTED AND DO EXCEED DOCUMENT SECURITY INDUSTRY GUIDELINES

www.igi.org

May 19, 2025
GI Report No LG709535984
ROUND BRILLIANT

7.10 - 7.13 X 4.33 MM	1.37 CARAT
Carat Weight	VVS 2
Color Grade	EXCELLENT
Cut Grade	60.6%
Depth	61%
Table	Medium to Slightly Thick (faceted)
Girdle	Poined
Culet	EXCELLENT
Polish	EXCELLENT
Symmetry	NONE
Fluorescence	None / Moderate

Comments:
This Laboratory Grown Diamond was created by Chemical Vapor Deposition (CVD) growth process.