

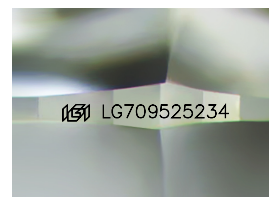
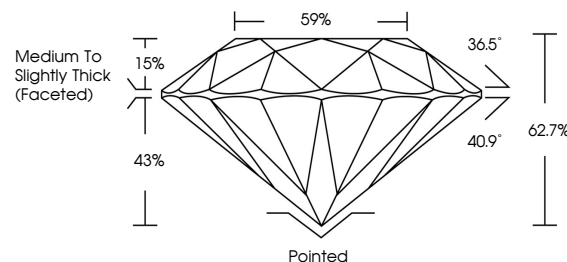


ELECTRONIC COPY

LABORATORY GROWN DIAMOND REPORT

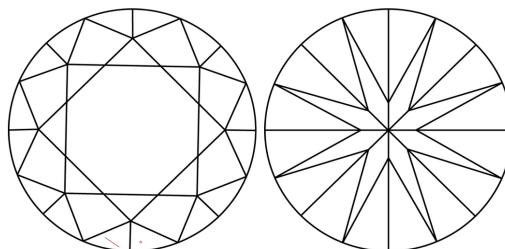
LG709525234
Report verification at lgi.org

PROPORTIONS



Sample Image Used

CLARITY CHARACTERISTICS



KEY TO SYMBOLS

Red symbols indicate internal characteristics.
Green symbols indicate external characteristics.

COLOR

D E F G H I J Faint Very Light Light

CLARITY

IF WS¹⁻² VS¹⁻² SI¹⁻² |¹⁻³

Internally Flawless	Very Very Slightly Included	Very Slightly Included	Slightly Included	Included
------------------------	--------------------------------	---------------------------	----------------------	----------



© IGI 2020, International Gemological Institute

FD - 10 20

www.igi.org

LABORATORY GROWN DIAMOND REPORT



May 19, 2025

IGI Report Number **LG709525234**Description **LABORATORY GROWN DIAMOND**Shape and Cutting Style **ROUND BRILLIANT**

Measurements 10.73 - 10.78 X 6.75 MM

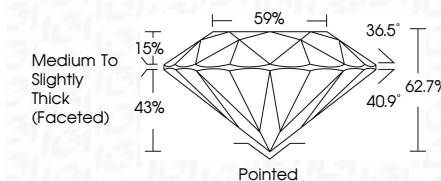
GRADING RESULTS

Carat Weight **4.89 CARATS**

Color Grade	F
-------------	---

Clarity Grade VS 1

Cut Grade **EXCELLENT**



ADDITIONAL GRADING INFORMATION

Polish **EXCELLENT**Symmetry **EXCELLENT**Fluorescence **NONE**Inscription(s) LG709525234

Comments: This Laboratory Grown Diamond was created by Chemical Vapor Deposition (CVD) growth process.
Type IIa



May 19, 2025	GI 10709520234	10.73 x 10.78 x 6.75 MM	4.89 CARATS	VS 1	Paired	None	Compassite: The Laboratory Grown Diamond was created by Chemical Vapor Deposition (CVD) growth process. Type IIa
Good Brilliant		Color Weight Color Grade		EXCELLENT 62.7% 69%	EXCELLENT EXCELLENT	Fluorescence Symmetry	
					Medium to Slightly Thick Faceted	68(1) G1709520234	