



**ELECTRONIC COPY**

LG709524688  
Report verification at igi.org



May 19, 2025  
IGI Report Number **LG709524688**  
Description **LABORATORY GROWN DIAMOND**  
Shape and Cutting Style **CUSHION MODIFIED BRILLIANT**  
Measurements **8.91 X 6.40 X 4.24 MM**  
**GRADING RESULTS**  
Carat Weight **1.83 CARAT**  
Color Grade **E**  
Clarity Grade **VS 2**

**LABORATORY GROWN DIAMOND REPORT**

May 19, 2025  
IGI Report Number **LG709524688**  
Description **LABORATORY GROWN DIAMOND**  
Shape and Cutting Style **CUSHION MODIFIED BRILLIANT**  
Measurements **8.91 X 6.40 X 4.24 MM**

**GRADING RESULTS**

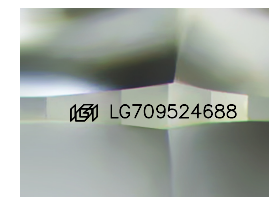
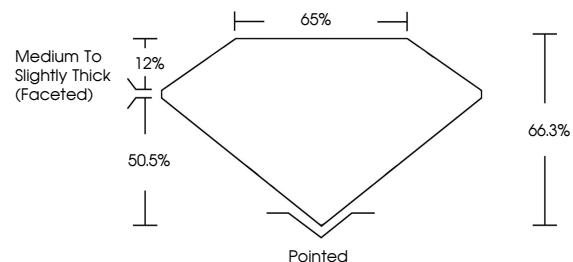
Carat Weight **1.83 CARAT**  
Color Grade **E**  
Clarity Grade **VS 2**

**ADDITIONAL GRADING INFORMATION**

Polish **EXCELLENT**  
Symmetry **EXCELLENT**  
Fluorescence **NONE**  
Inscription(s) **IGI LG709524688**

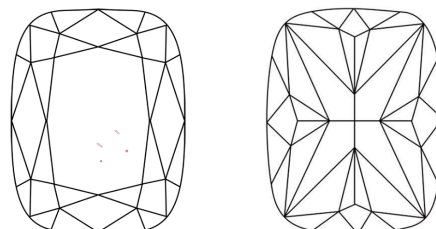
Comments: This Laboratory Grown Diamond was created by Chemical Vapor Deposition (CVD) growth process.  
Type IIa

**PROPORTIONS**



Sample Image Used

**CLARITY CHARACTERISTICS**



**KEY TO SYMBOLS**

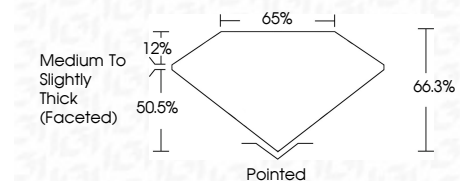
Red symbols indicate internal characteristics.  
Green symbols indicate external characteristics.

**COLOR**

D E F G H I J Faint Very Light Light

**CLARITY**

IF	VS <sup>1-2</sup>	VS <sup>1-2</sup>	SI <sup>1-2</sup>	I <sup>1-3</sup>
Internally Flawless	Very Very Slightly Included	Very Slightly Included	Slightly Included	Included



**ADDITIONAL GRADING INFORMATION**

Polish **EXCELLENT**  
Symmetry **EXCELLENT**  
Fluorescence **NONE**  
Inscription(s) **IGI LG709524688**  
Comments: This Laboratory Grown Diamond was created by Chemical Vapor Deposition (CVD) growth process.  
Type IIa



**IGI**



May 19, 2025  
IGI Report No LG709524688  
CUSHION MODIFIED BRILLIANT  
8.91 X 6.40 X 4.24 MM  
1.83 CARAT  
E  
VS 2  
66.3%  
50.5%  
Medium to Slightly Thick (Faceted)  
Pointed  
EXCELLENT  
EXCELLENT  
NONE  
IGI LG709524688

Comments: This Laboratory Grown Diamond was created by Chemical Vapor Deposition (CVD) growth process.  
Type IIa