



ELECTRONIC COPY

LG709523804
Report verification at igi.org



May 21, 2025
IGI Report Number **LG709523804**
Description **LABORATORY GROWN DIAMOND**
Shape and Cutting Style **CUSHION MODIFIED BRILLIANT**
Measurements **8.21 X 6.20 X 4.31 MM**
GRADING RESULTS
Carat Weight **2.04 CARATS**
Color Grade **FANCY YELLOWISH BROWN**
Clarity Grade **VS 2**

LABORATORY GROWN DIAMOND REPORT

May 21, 2025
IGI Report Number **LG709523804**
Description **LABORATORY GROWN DIAMOND**
Shape and Cutting Style **CUSHION MODIFIED BRILLIANT**
Measurements **8.21 X 6.20 X 4.31 MM**

GRADING RESULTS

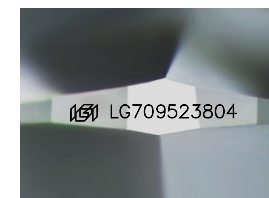
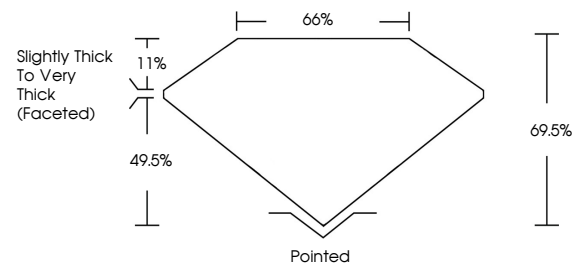
Carat Weight **2.04 CARATS**
Color Grade **FANCY YELLOWISH BROWN**
Clarity Grade **VS 2**

ADDITIONAL GRADING INFORMATION

Polish **VERY GOOD**
Symmetry **EXCELLENT**
Fluorescence **SLIGHT**
Inscription(s) **LG709523804**

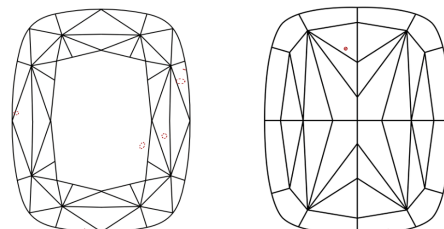
Comments: This Laboratory Grown Diamond was created by Chemical Vapor Deposition (CVD) growth process.
Indications of post-growth treatment.

PROPORTIONS



Sample Image Used

CLARITY CHARACTERISTICS



KEY TO SYMBOLS

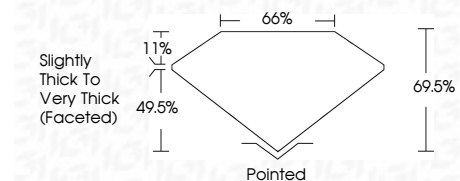
Red symbols indicate internal characteristics.
Green symbols indicate external characteristics.

COLOR

D E F G H I J Faint Very Light Light

CLARITY

IF	VS ¹⁻²	VS ¹⁻²	SI ¹⁻²	I ¹⁻³
Internally Flawless	Very Very Slightly Included	Very Slightly Included	Slightly Included	Included



ADDITIONAL GRADING INFORMATION

Polish **VERY GOOD**
Symmetry **EXCELLENT**
Fluorescence **SLIGHT**
Inscription(s) **LG709523804**
Comments: This Laboratory Grown Diamond was created by Chemical Vapor Deposition (CVD) growth process.
Indications of post-growth treatment.



May 21, 2025
IGI Report No LG709523804
CUSHION MODIFIED BRILLIANT
8.21 X 6.20 X 4.31 MM
2.04 CARATS
Carat Weight
Color Grade
FANCY YELLOWISH BROWN
VS 2
69.5%
65%
Slightly Thick To Very Thick (Faceted)
Pointed
Polish
VERY GOOD
Symmetry
EXCELLENT
Fluorescence
SLIGHT
Inscription(s)
 LG709523804
Comments: This Laboratory Grown Diamond was created by Chemical Vapor Deposition (CVD) growth process.
Indications of post-growth treatment.