



**ELECTRONIC COPY**

LG709518230  
Report verification at igi.org



June 6, 2025  
IGI Report Number **LG709518230**  
Description **LABORATORY GROWN DIAMOND**  
Shape and Cutting Style **ROUND MIXED CUT**  
Measurements **7.75 - 7.80 X 4.72 MM**  
**GRADING RESULTS**  
Carat Weight **1.95 CARAT**  
Color Grade **FANCY INTENSE PINK**  
Clarity Grade **VVS 2**

June 6, 2025  
IGI Report Number **LG709518230**  
Description **LABORATORY GROWN DIAMOND**  
Shape and Cutting Style **ROUND MIXED CUT**  
Measurements **7.75 - 7.80 X 4.72 MM**

**GRADING RESULTS**

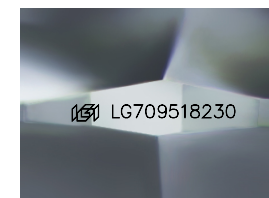
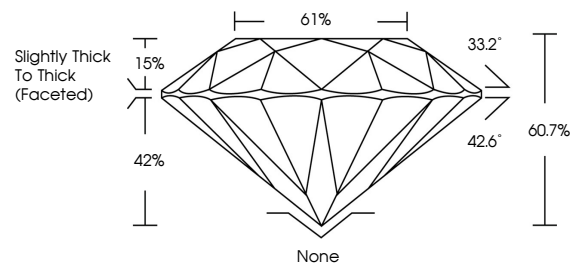
Carat Weight **1.95 CARAT**  
Color Grade **FANCY INTENSE PINK**  
Clarity Grade **VVS 2**

**ADDITIONAL GRADING INFORMATION**

Polish **EXCELLENT**  
Symmetry **EXCELLENT**  
Fluorescence **SLIGHT**  
Inscription(s) **IGI LG709518230**

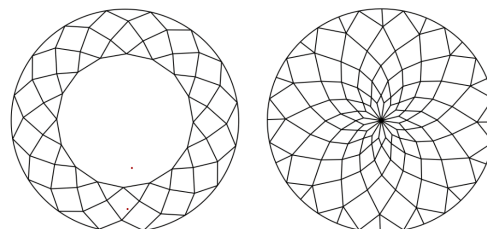
Comments: This Laboratory Grown Diamond was created by Chemical Vapor Deposition (CVD) growth process.  
Indications of post-growth treatment.

**PROPORTIONS**



Sample Image Used

**CLARITY CHARACTERISTICS**



**KEY TO SYMBOLS**

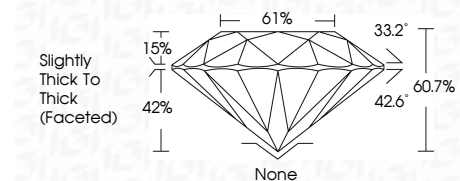
Red symbols indicate internal characteristics.  
Green symbols indicate external characteristics.

**COLOR**

D E F G H I J Faint Very Light Light

**CLARITY**

IF	VS <sup>1-2</sup>	VS <sup>1-2</sup>	SI <sup>1-2</sup>	I <sup>1-3</sup>
Internally Flawless	Very Very Slightly Included	Very Slightly Included	Slightly Included	Included



**ADDITIONAL GRADING INFORMATION**

Polish **EXCELLENT**  
Symmetry **EXCELLENT**  
Fluorescence **SLIGHT**  
Inscription(s) **IGI LG709518230**  
Comments: This Laboratory Grown Diamond was created by Chemical Vapor Deposition (CVD) growth process.  
Indications of post-growth treatment.



June 6, 2025  
IGI Report No LG709518230  
**ROUND MIXED CUT**  
1.95 CARAT  
FANCY INTENSE PINK  
VVS 2  
60.7%  
61%  
Slightly Thick To Thick (Faceted)  
None  
EXCELLENT  
EXCELLENT  
SLIGHT  
IGI LG709518230

Comments: This Laboratory Grown Diamond was created by Chemical Vapor Deposition (CVD) growth process.  
Indications of post-growth treatment.