



ELECTRONIC COPY

LG708582971
Report verification at igi.org



May 19, 2025

IGI Report Number **LG708582971**

Description **LABORATORY GROWN DIAMOND**

Shape and Cutting Style **CUT CORNERED
RECTANGULAR MODIFIED
BRILLIANT**

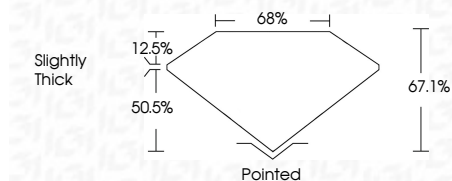
Measurements **11.31 X 7.85 X 5.27 MM**

GRADING RESULTS

Carat Weight **4.06 CARATS**

Color Grade **D**

Clarity Grade **VS 1**



ADDITIONAL GRADING INFORMATION

Polish **EXCELLENT**

Symmetry **EXCELLENT**

Fluorescence **NONE**

Inscription(s) **IGI LG708582971**

Comments: This Laboratory Grown Diamond was created by Chemical Vapor Deposition (CVD) growth process. Type IIa



May 19, 2025	IGI Report No LG708582971	CUT CORNERED RECT. MODIFIED BRILLIANT	11.31 X 7.85 X 5.27 MM	4.06 CARATS	D	VS 1	67.1%	50.5%	Slightly Thick	Pointed	EXCELLENT	EXCELLENT	NONE	IGI LG708582971
IGI	Carat Weight	Color Grade	Clarity Grade	Table	Depth	Graile	Culet	Polish	Symmetry	Fluorescence	Inscription(s)	Comments: This Laboratory Grown Diamond was created by Chemical Vapor Deposition (CVD) growth process. Type IIa		

LABORATORY GROWN DIAMOND REPORT

May 19, 2025

IGI Report Number **LG708582971**

Description **LABORATORY GROWN DIAMOND**

Shape and Cutting Style **CUT CORNERED RECTANGULAR
MODIFIED BRILLIANT**

Measurements **11.31 X 7.85 X 5.27 MM**

GRADING RESULTS

Carat Weight **4.06 CARATS**

Color Grade **D**

Clarity Grade **VS 1**

ADDITIONAL GRADING INFORMATION

Polish **EXCELLENT**

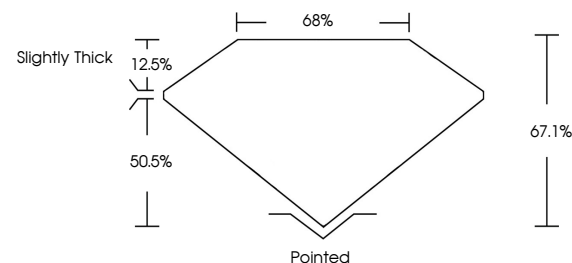
Symmetry **EXCELLENT**

Fluorescence **NONE**

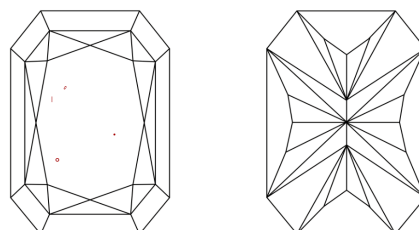
Inscription(s) **IGI LG708582971**

Comments: This Laboratory Grown Diamond was created by Chemical Vapor Deposition (CVD) growth process. Type IIa

PROPORTIONS

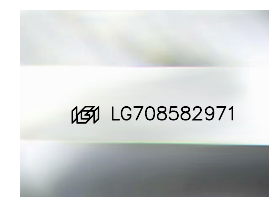


CLARITY CHARACTERISTICS



KEY TO SYMBOLS

Red symbols indicate internal characteristics.
Green symbols indicate external characteristics.



Sample Image Used

COLOR

D E F G H I J Faint Very Light Light

CLARITY

IF WS¹⁻² VS¹⁻² SI¹⁻² I¹⁻³

Internally Flawless Very Very Slightly Included Very Slightly Included Slightly Included Included

