



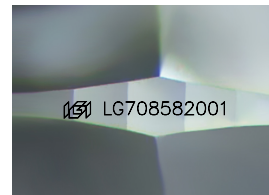
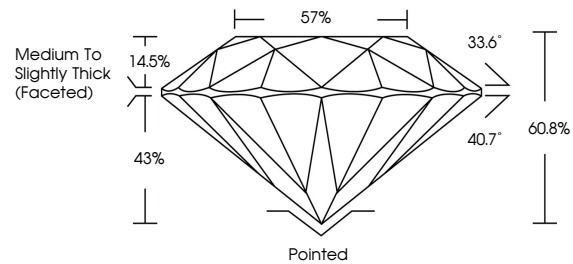
**INTERNATIONAL
GEMOLOGICAL
INSTITUTE**

ELECTRONIC COPY

LABORATORY GROWN DIAMOND REPORT

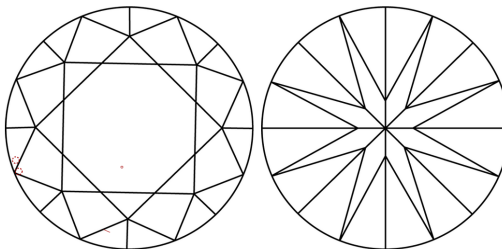
LG708582001
Report verification at igi.org

PROPORTIONS



Sample Image Used

CLARITY CHARACTERISTICS



KEY TO SYMBOLS

Red symbols indicate internal characteristics.
Green symbols indicate external characteristics.

COLOR

D E F G H I J Faint Very Light Light

CLARITY

IF WS¹⁻² VS¹⁻² SI¹⁻² |¹⁻³

Internally Flawless	Very Very Slightly Included	Very Slightly Included	Slightly Included	Included
------------------------	--------------------------------	---------------------------	----------------------	----------



May 19, 2025

IGI Report Number **LG708582001**

Description	LABORATORY GROWN DIAMOND
-------------	--------------------------

Shape and Cutting Style **ROUND BRILLIANT**

Measurements	8.22 - 8.24 X 5.00 MM
--------------	-----------------------

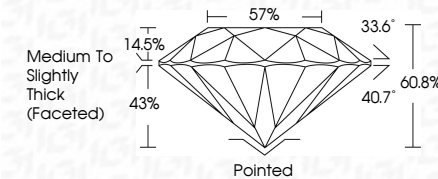
GRADING RESULTS

Carat Weight **2.07 CARATS**

Color Grade	E
-------------	---

Clarity Grade VS 1

Cut Grade **IDEAL**



ADDITIONAL GRADING INFORMATION

Polish **EXCELLENT**Symmetry **EXCELLENT**Fluorescence **NONE**

Inscription(s)  LG708582001

Comments: This Laboratory Grown Diamond was created by Chemical Vapor Deposition (CVD) growth process.
Type IIa



IG



© IGI 2020, International Gemological Institute

FD - 10 20

www.igi.org

THIS DOCUMENT WAS PRODUCED WITH THE FOLLOWING SECURITY MEASURES: SPECIAL DOCUMENT PAPER, INK SCREENS, WATERMARK, BATHOPHONY AND DESKTOP, LIPS, GOGGLES, AND OTHER SECURITY FEATURES: A VIBRATING, AND DO NOT DISCLOSE YOUR INFORMATION UNDER ANY CIRCUMSTANCES.

May 19, 2025
GI Report No LG708582001
ROUND BRILLIANT

3.22 - 8.24 X 5.00 MM	2.07 CARATS	E
Carat Weight	VS 1	IDEAL
Color Grade		60.6%
Clarity Grade		57%
Depth		Medium to slightly Thick (faceted)
Table		
Girdle		
Culet		Pointed
Polish		EXCELLENT
Symmetry		EXCELLENT
Fluorescence		NONE
Comments		See lot 1238502031

Comments:
This Laboratory Grown Diamond was
created by Chemical Vapor Deposition
(CVD) growth process.