

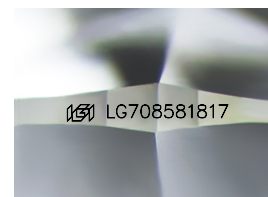
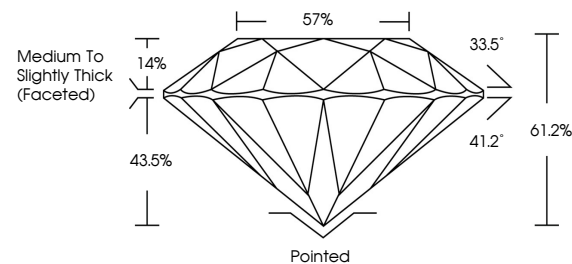


**ELECTRONIC COPY**

## LABORATORY GROWN DIAMOND REPORT

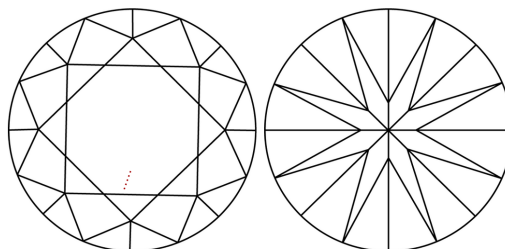
LG708581817  
Report verification at [igi.org](https://igi.org)

## PROPORTIONS



Sample Image Used

## CLARITY CHARACTERISTICS



### KEY TO SYMBOLS

Red symbols indicate internal characteristics.  
Green symbols indicate external characteristics.

## COLOR

D E F G H I J Faint Very Light Light

## CLARITY

IF WS<sup>1-2</sup> VS<sup>1-2</sup> SI<sup>1-2</sup> |<sup>1-3</sup>

Internally Flawless	Very Very Slightly Included	Very Slightly Included	Slightly Included	Included
------------------------	--------------------------------	---------------------------	----------------------	----------

## LABORATORY GROWN DIAMOND REPORT



May 17, 2025

IGI Report Number LG708581817

Description **LABORATORY GROWN DIAMOND**Shape and Cutting Style **ROUND BRILLIANT**

Measurements 8.21 - 8.26 X 5.04 MM

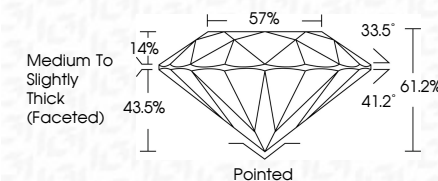
## GRADING RESULTS

Carat Weight **2.09 CARATS**

Color Grade **E**

Clarity Grade VS 1

Cut Grade **IDEAL**



### ADDITIONAL GRADING INFORMATION

Polish **EXCELLENT**Symmetry **EXCELLENT**

Fluorescence NON

Inscription(s)  LG708581817

Comments: This Laboratory Grown Diamond was created by Chemical Vapor Deposition (CVD) growth process.  
Type IIa



© IGI 2020, International Gemological Institute

FD - 10 20

**www.igi.org**



THIS DOCUMENT WAS PRODUCED WITH THE FOLLOWING SECURITY MEASURES: SPECIAL DOCUMENT PAPER, INK SCREENS, WATERMARK, BACKGROUND DESIGNS, HOLOGRAM AND OTHER SECURITY FEATURES NOT LISTED AND DO EXCEED DOCUMENT SECURITY INDUSTRY GUIDELINES

May 17, 2026	IGI Report No. IGT05891817	2.09 CARATS	VS 1	Pointed	Comments: The Laboratory has examined this natural rough Deposition (GVD) growth product. Type IIa
ROUND BRILLIANT		E	IDEAL	EXCELLENT	
			61.2%	EXCELLENT	
			57%	NONE	
			Medium to Slightly Thick (focused)	1691 15705561817	
4.21 - 5.26 X 5.04 MM					
Carat Weight					
Color Grade					
Clarity Grade					
Cut Grade					
Depth					
Table					
Grade					
Culet					
Polish					
Symmetry					
Fluorescence					
Inscriptions(s)					