



**ELECTRONIC COPY**

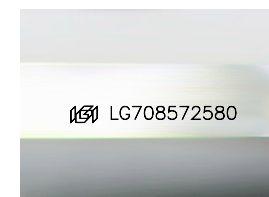
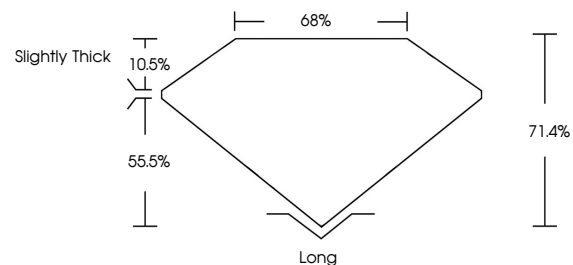
LG708572580  
Report verification at [igi.org](http://igi.org)



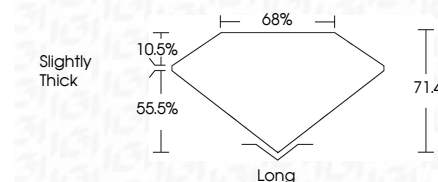
May 20, 2025  
IGI Report Number **LG708572580**  
Description **LABORATORY GROWN DIAMOND**  
Shape and Cutting Style **EMERALD CUT**  
Measurements **7.58 X 5.28 X 3.77 MM**  
**GRADING RESULTS**  
Carat Weight **1.50 CARAT**  
Color Grade **FANCY INTENSE PINK**  
Clarity Grade **VS 1**

May 20, 2025  
IGI Report Number **LG708572580**  
Description **LABORATORY GROWN DIAMOND**  
Shape and Cutting Style **EMERALD CUT**  
Measurements **7.58 X 5.28 X 3.77 MM**  
**GRADING RESULTS**  
Carat Weight **1.50 CARAT**  
Color Grade **FANCY INTENSE PINK**  
Clarity Grade **VS 1**

**PROPORTIONS**



Sample Image Used



**ADDITIONAL GRADING INFORMATION**

Polish **EXCELLENT**  
Symmetry **VERY GOOD**  
Fluorescence **STRONG**  
Inscription(s) **IGI LG708572580**

Comments: This Laboratory Grown Diamond was created by Chemical Vapor Deposition (CVD) growth process. Indications of post-growth treatment.

**ADDITIONAL GRADING INFORMATION**

Polish **EXCELLENT**  
Symmetry **VERY GOOD**  
Fluorescence **STRONG**  
Inscription(s) **IGI LG708572580**

Comments: This Laboratory Grown Diamond was created by Chemical Vapor Deposition (CVD) growth process. Indications of post-growth treatment.

**COLOR**

D E F G H I J Faint Very Light Light

**CLARITY**

IF WS<sup>1-2</sup> VS<sup>1-2</sup> SI<sup>1-2</sup> I<sup>1-3</sup>

Internally Flawless Very Very Slightly Included Very Slightly Included Slightly Included Included



**IGI**



May 20, 2025  
IGI Report No LG708572580  
**EMERALD CUT**  
1.50 CARAT  
7.58 X 5.28 X 3.77 MM  
Carat Weight  
Color Grade **FANCY INTENSE PINK**  
Clarity Grade **VS 1**  
Depth **71.4%**  
Table **68%**  
Girdle **Slightly Thick**  
Culet **Long**  
Polish **EXCELLENT**  
Symmetry **VERY GOOD**  
Fluorescence **STRONG**  
Inscription(s) **IGI LG708572580**  
Comments: This Laboratory Grown Diamond was created by Chemical Vapor Deposition (CVD) growth process. Indications of post-growth treatment.