



ELECTRONIC COPY

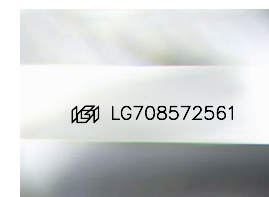
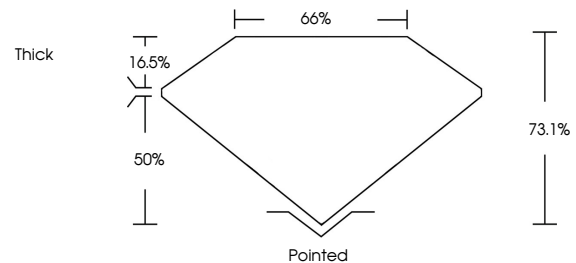
LG708572561
Report verification at igi.org



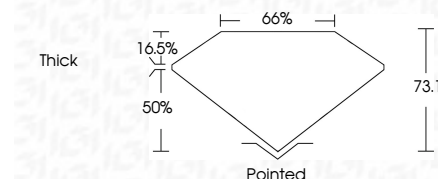
May 20, 2025
IGI Report Number **LG708572561**
Description **LABORATORY GROWN DIAMOND**
Shape and Cutting Style **CUT CORNERED
RECTANGULAR MODIFIED
BRILLIANT**
Measurements **9.95 X 6.59 X 4.82 MM**
GRADING RESULTS
Carat Weight **3.02 CARATS**
Color Grade **FANCY VIVID PINK**
Clarity Grade **VS 1**

May 20, 2025
IGI Report Number **LG708572561**
Description **LABORATORY GROWN DIAMOND**
Shape and Cutting Style **CUT CORNERED RECTANGULAR
MODIFIED BRILLIANT**
Measurements **9.95 X 6.59 X 4.82 MM**
GRADING RESULTS
Carat Weight **3.02 CARATS**
Color Grade **FANCY VIVID PINK**
Clarity Grade **VS 1**

PROPORTIONS



Sample Image Used



ADDITIONAL GRADING INFORMATION

Polish **EXCELLENT**
Symmetry **EXCELLENT**
Fluorescence **SLIGHT**
Inscription(s) **IGI LG708572561**

Comments: This Laboratory Grown Diamond was created by Chemical Vapor Deposition (CVD) growth process. Indications of post-growth treatment.

COLOR

D E F G H I J Faint Very Light Light

CLARITY

IF	WS ¹⁻²	VS ¹⁻²	SI ¹⁻²	I ¹⁻³
Internally Flawless	Very Very Slightly Included	Very Slightly Included	Slightly Included	Included

ADDITIONAL GRADING INFORMATION

Polish **EXCELLENT**
Symmetry **EXCELLENT**
Fluorescence **SLIGHT**
Inscription(s) **IGI LG708572561**
Comments: This Laboratory Grown Diamond was created by Chemical Vapor Deposition (CVD) growth process. Indications of post-growth treatment.



IGI

May 20, 2025
IGI Report No LG708572561
CUT CORNERED RECT. MODIFIED BRILLIANT
9.95 X 6.59 X 4.82 MM
3.02 CARATS
FANCY VIVID PINK
VS 1
73.1%
66%
Thick
Pointed
EXCELLENT
EXCELLENT
SLIGHT
IGI LG708572561

Comments: This Laboratory Grown Diamond was created by Chemical Vapor Deposition (CVD) growth process. Indications of post-growth treatment.