



**ELECTRONIC COPY**

LG708560177  
Report verification at igi.org



May 24, 2025

IGI Report Number **LG708560177**

Description **LABORATORY GROWN DIAMOND**

Shape and Cutting Style **ROUND MIXED CUT**

Measurements **11.85 - 11.85 X 7.09 MM**

**GRADING RESULTS**

Carat Weight **6.50 CARATS**

Color Grade **FANCY PINK**

Clarity Grade **VVS 2**

May 24, 2025  
IGI Report Number **LG708560177**  
Description **LABORATORY GROWN DIAMOND**  
Shape and Cutting Style **ROUND MIXED CUT**  
Measurements **11.85 - 11.85 X 7.09 MM**

**GRADING RESULTS**

Carat Weight **6.50 CARATS**

Color Grade **FANCY PINK**

Clarity Grade **VVS 2**

**ADDITIONAL GRADING INFORMATION**

Polish **EXCELLENT**

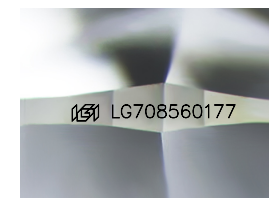
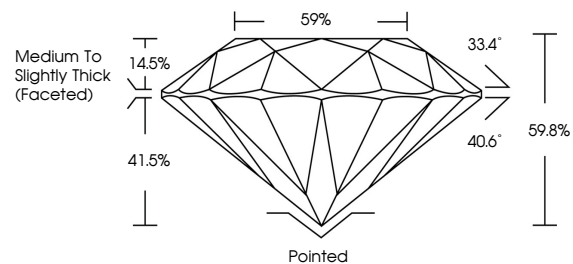
Symmetry **EXCELLENT**

Fluorescence **SLIGHT**

Inscription(s) **IGI LG708560177**

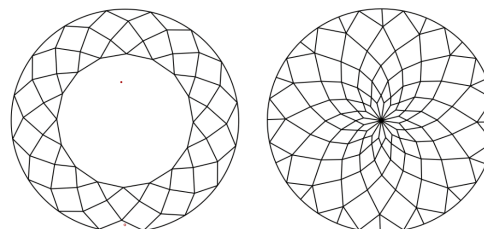
Comments: This Laboratory Grown Diamond was created by Chemical Vapor Deposition (CVD) growth process. Indications of post-growth treatment.

**PROPORTIONS**



Sample Image Used

**CLARITY CHARACTERISTICS**



**KEY TO SYMBOLS**

Red symbols indicate internal characteristics.  
Green symbols indicate external characteristics.

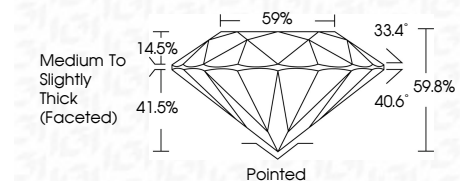
**COLOR**

D E F G H I J Faint Very Light Light

**CLARITY**

IF VS<sup>1-2</sup> VS<sup>1-2</sup> SI<sup>1-2</sup> I<sup>1-3</sup>

Internally Flawless Very Very Slightly Included Very Slightly Included Slightly Included Included



**ADDITIONAL GRADING INFORMATION**

Polish **EXCELLENT**

Symmetry **EXCELLENT**

Fluorescence **SLIGHT**

Inscription(s) **IGI LG708560177**

Comments: This Laboratory Grown Diamond was created by Chemical Vapor Deposition (CVD) growth process. Indications of post-growth treatment.



**IGI**



May 24, 2025  
IGI Report No LG708560177  
ROUND MIXED CUT

6.50 CARATS  
FANCY PINK

VVS 2  
69.8%  
59%

Medium to Slightly Thick (Faceted)

Pointed  
EXCELLENT  
EXCELLENT  
SLIGHT  
IGI LG708560177

Comments: This Laboratory Grown Diamond was created by Chemical Vapor Deposition (CVD) growth process. Indications of post-growth treatment.