

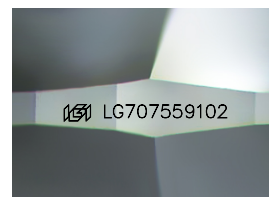
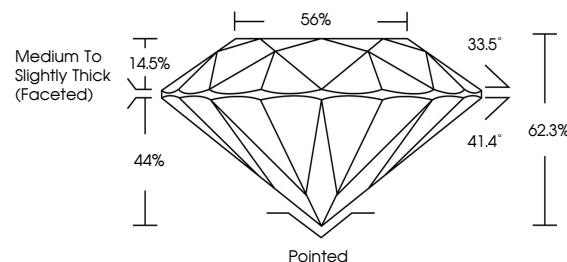


ELECTRONIC COPY

LABORATORY GROWN DIAMOND REPORT

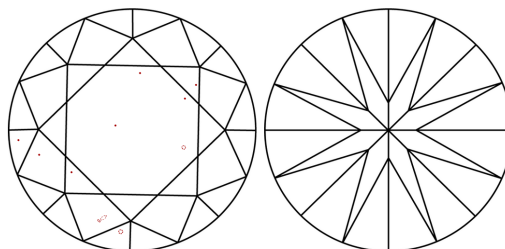
LG707559102
Report verification at lgi.org

PROPORTIONS



Sample Image Used

CLARITY CHARACTERISTICS



KEY TO SYMBOLS

Red symbols indicate internal characteristics.
Green symbols indicate external characteristics.

COLOR

D E F G H I J Faint Very Light Light

CLARITY

IF WS¹⁻² VS¹⁻² SI¹⁻² |¹⁻³

Internally Flawless	Very Very Slightly Included	Very Slightly Included	Slightly Included	Included
------------------------	--------------------------------	---------------------------	----------------------	----------



May 16, 2025

IGI Report Number **LG707559102**Description **LABORATORY GROWN DIAMOND**Shape and Cutting Style **ROUND BRILLIANT**

Measurements	6.48 - 6.51 X 4.05 MM
--------------	-----------------------

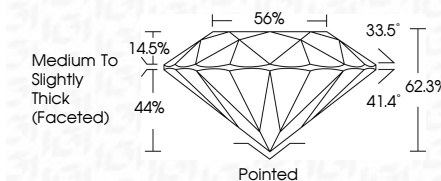
GRADING RESULTS

Carat Weight **1.04 CARAT**

Color Grade	D
-------------	---

Clarity Grade VS 1

Cut Grade **IDEAL**



ADDITIONAL GRADING INFORMATION

Polish **EXCELLENT**Symmetry **EXCELLENT**Fluorescence **NONE**Inscription(s) LG707559102

Comments: This Laboratory Grown Diamond was created by Chemical Vapor Deposition (CVD) growth process.
Type IIa



© IGI 2020, International Gemological Institute

FD - 10 20

www.igi.org



THIS DOCUMENT WAS PRODUCED WITH THE FOLLOWING SECURITY MEASURES: SPECIAL DOCUMENT PAPER, INK SCREENS, WATERMARK, BACKGROUND DESIGNS, HOLOGRAM AND OTHER SECURITY FEATURES NOT LISTED AND DO EXCEED DOCUMENT SECURITY INDUSTRY GUIDELINE

May 15, 2026	GI Report No. LG70759102	1.04 CARAT	Vs 1	Ported	Comments: Grown Diamond was created by Chemical Vapor Deposition (CVD) growth process. Type IIa
ROUND BRILLIANT	Carat Weight	IDEAL	62.3%	EXCELLENT	
	Color Grade	Clarity Grade	56%	NONE	
		Cut Grade	Medium to Slightly Thick (Faceted)	169 LG70759102	
		Table			
		Girdle		Polish	
				Symmetry	
				Fluorescence	
				Inscription(s)	