



ELECTRONIC COPY

LG707556390
Report verification at igi.org



October 28, 2025
IGI Report Number **LG707556390**
Description **LABORATORY GROWN DIAMOND**
Shape and Cutting Style **CUT CORNERED
RECTANGULAR MODIFIED
BRILLIANT**
Measurements **7.38 X 5.36 X 3.59 MM**
GRADING RESULTS
Carat Weight **1.36 CARAT**
Color Grade **FANCY INTENSE BLUISH
GREEN**
Clarity Grade **VS 1**

LABORATORY GROWN DIAMOND REPORT

October 28, 2025
IGI Report Number **LG707556390**
Description **LABORATORY GROWN DIAMOND**
Shape and Cutting Style **CUT CORNERED RECTANGULAR
MODIFIED BRILLIANT**
Measurements **7.38 X 5.36 X 3.59 MM**

GRADING RESULTS

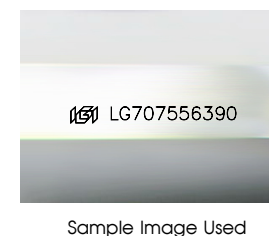
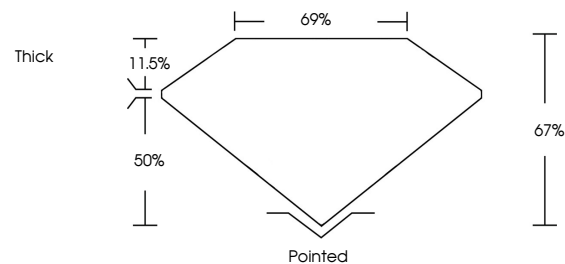
Carat Weight **1.36 CARAT**
Color Grade **FANCY INTENSE BLUISH GREEN**
Clarity Grade **VS 1**

ADDITIONAL GRADING INFORMATION

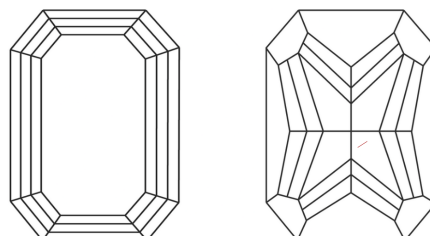
Polish **EXCELLENT**
Symmetry **EXCELLENT**
Fluorescence **NONE**
Inscription(s) **IGI LG707556390**

Comments: This Laboratory Grown Diamond was created by High Pressure High Temperature (HPHT) growth process. Indications of post-growth treatment.

PROPORTIONS



CLARITY CHARACTERISTICS



KEY TO SYMBOLS

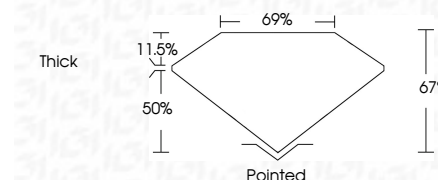
Red symbols indicate internal characteristics.
Green symbols indicate external characteristics.

COLOR

D E F G H I J Faint Very Light Light

CLARITY

FL	IF	VS ¹⁻²	VS ¹⁻²	SI ¹⁻²	I ¹⁻³
Flawless	Internally Flawless	Very Very Slightly Included	Very Slightly Included	Slightly Included	Included



ADDITIONAL GRADING INFORMATION

Polish **EXCELLENT**
Symmetry **EXCELLENT**
Fluorescence **NONE**
Inscription(s) **IGI LG707556390**
Comments: This Laboratory Grown Diamond was created by High Pressure High Temperature (HPHT) growth process. Indications of post-growth treatment.



October 28, 2025
IGI Report No LG707556390
CUT CORNERED RECT. MODIFIED BRILLIANT
7.38 X 5.36 X 3.59 MM
1.36 CARAT
FANCY INTENSE BLUISH GREEN
VS 1
67%
69%
Thick
Pointed
EXCELLENT
EXCELLENT
NONE
IGI LG707556390

Comments: This Laboratory Grown Diamond was created by High Pressure High Temperature (HPHT) growth process. Indications of post-growth treatment.